



**USB CopyNotify! (Version 2.7)**

**Server INSTALLATION GUIDE**

# **Server INSTALLATION GUIDE**



# USB CopyNotify! (Version 2.7)

## Server INSTALLATION GUIDE

### Components of USB CopyNotify!

#### *USB CopyNotify! Server Component:*

This component is installed on the computer that will actually display/receive the alerts/notifications from other computers on the office network. The server component also enables the user to configure the settings for all the other computers on the network.

#### *USB CopyNotify! Client Component:*

This component is installed on the computers on the network that need to be monitored for possible data theft activity.

### Supported Operating Systems

Win XP (SP2) , Win Vista, Win 7.0, Win 2003, Win 2008

### USB CopyNotify! Server Installation

Important Installation Tip :

Before Installing the USB CopyNotify! Server/Client, please ensure that if a firewall is installed the following ports need to be opened.

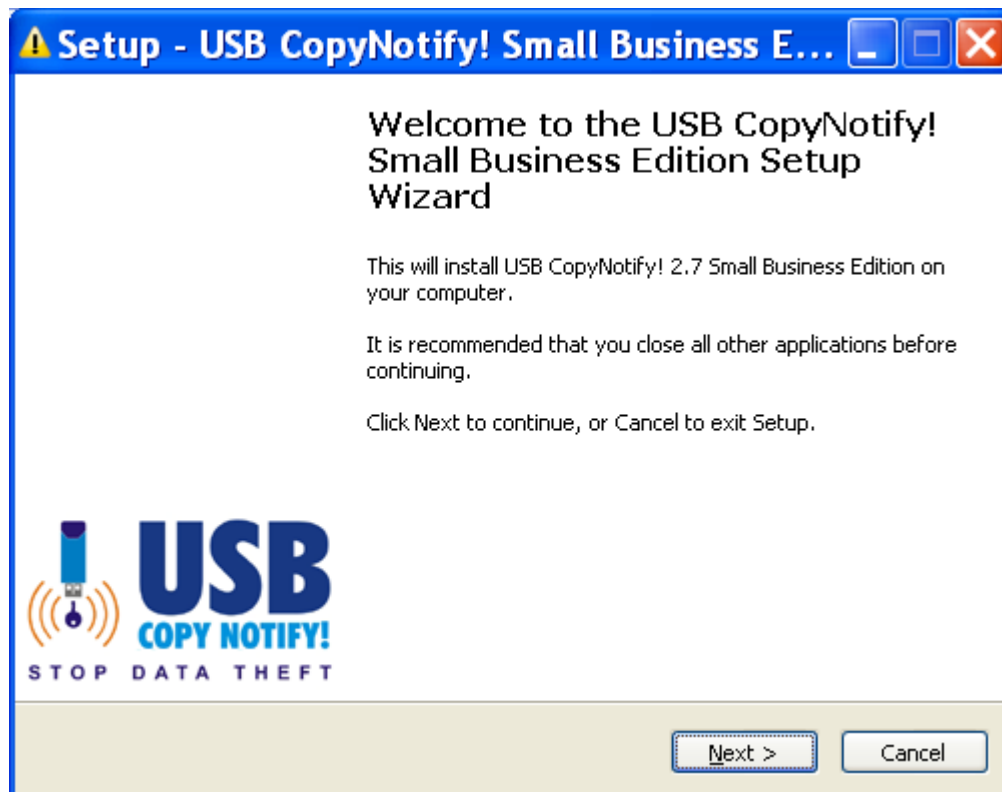
- Port 40007 for UDP
- Port 40005 for UDP
- Port 5555 for UDP
- Port 5553 for TCP.



# USB CopyNotify! (Version 2.7)

## Server INSTALLATION GUIDE

**Double Click on USB CopyNotify!.exe and the following screen will appear**



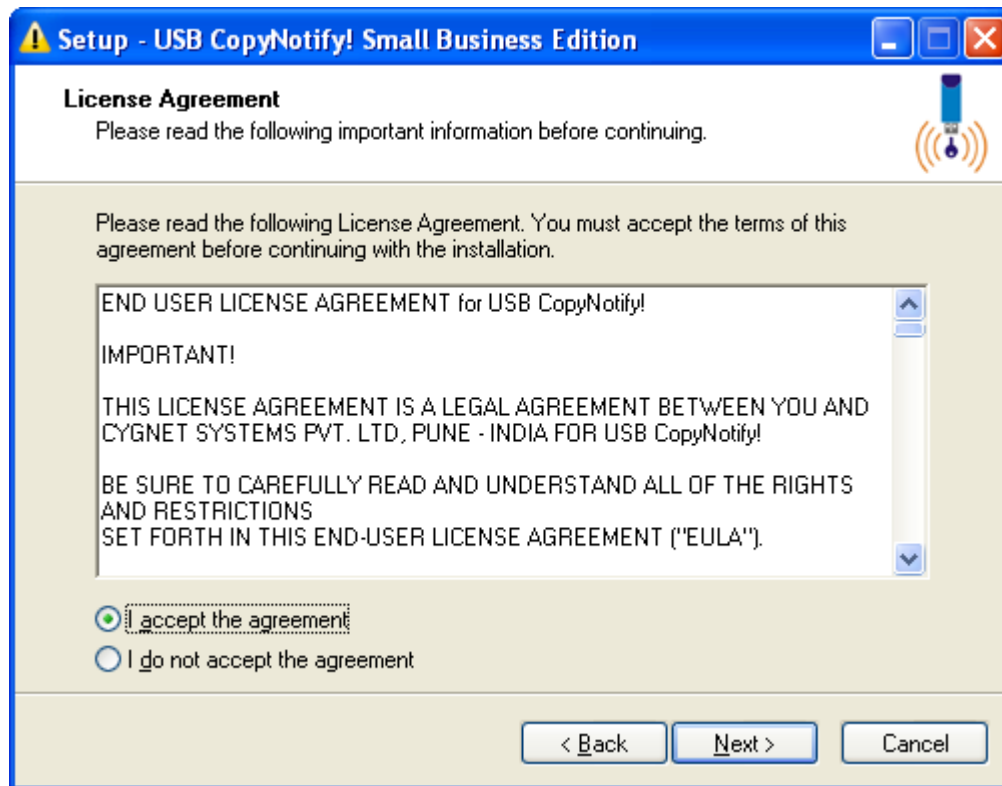
Click Next to continue....



# USB CopyNotify! (Version 2.7)

## Server INSTALLATION GUIDE

The license agreement will be displayed (as shown below) which will need to be reviewed and accepted by the user. Once the license agreement has been reviewed click on "I accept the agreement"



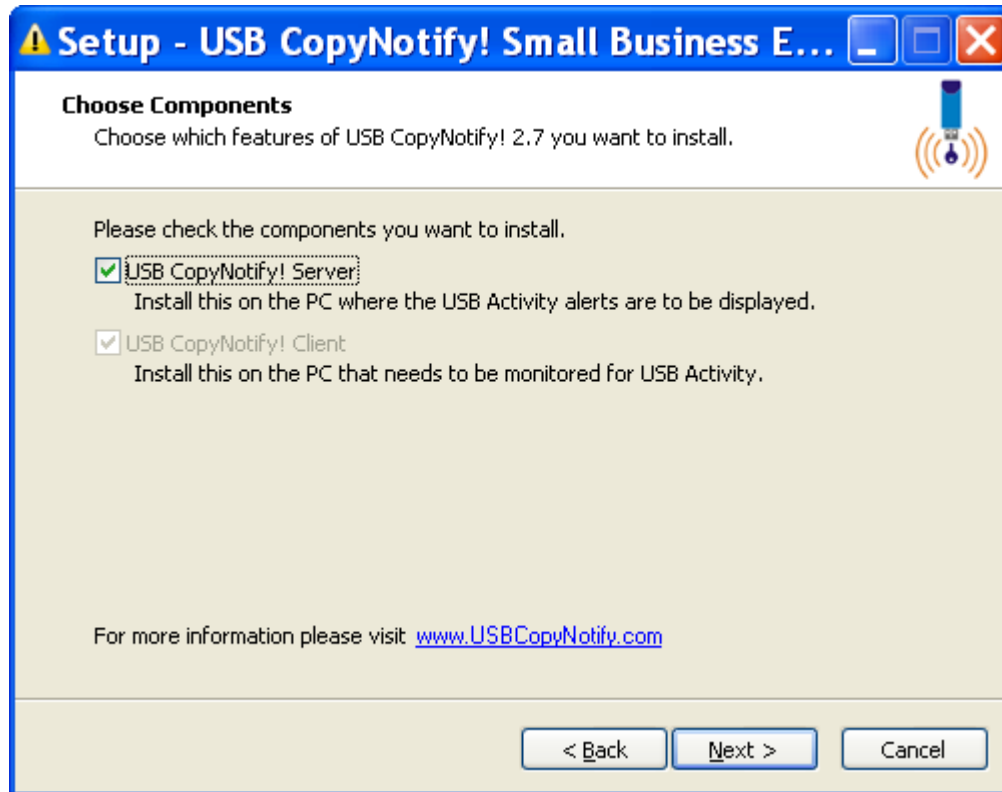
Click Next to Continue



# USB CopyNotify! (Version 2.7)

## Server INSTALLATION GUIDE

Select USB CopyNotify! Server option (as shown below)



Note:

By default USB CopyNotify! Client will also be loaded on the same machine

Click Next to continue.



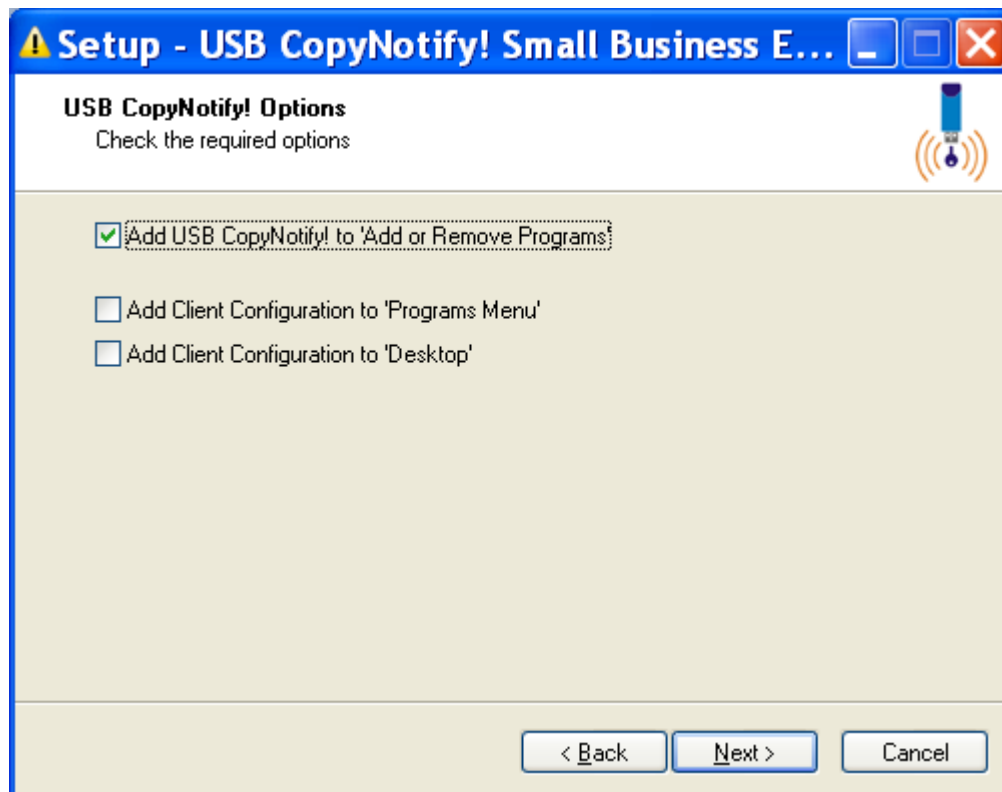
# USB CopyNotify! (Version 2.7)

## Server INSTALLATION GUIDE

### Installation Options

The Installation will now allow you enable / disable the option of

- Adding the Installation to ADD REMOVE Programs
- Adding Client Configuration Menu Item in the 'Programs Menu
- Adding Client Configuration Icon to 'Desktop'



Click on 'Next to continue

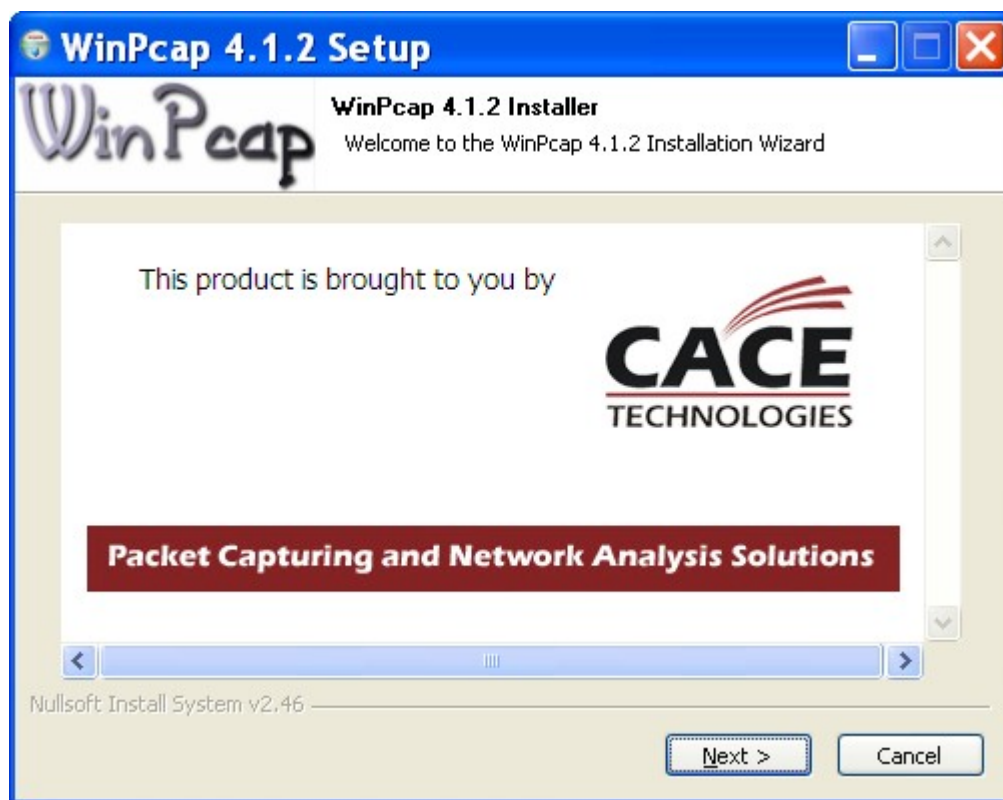


## USB CopyNotify! (Version 2.7)

### Server INSTALLATION GUIDE

Installing WinPcap component required for USB CopyNotify! On Server

Some features of the USB CopyNotify! require the WinPcap library which is automatically installed as follows :-



**Note :**

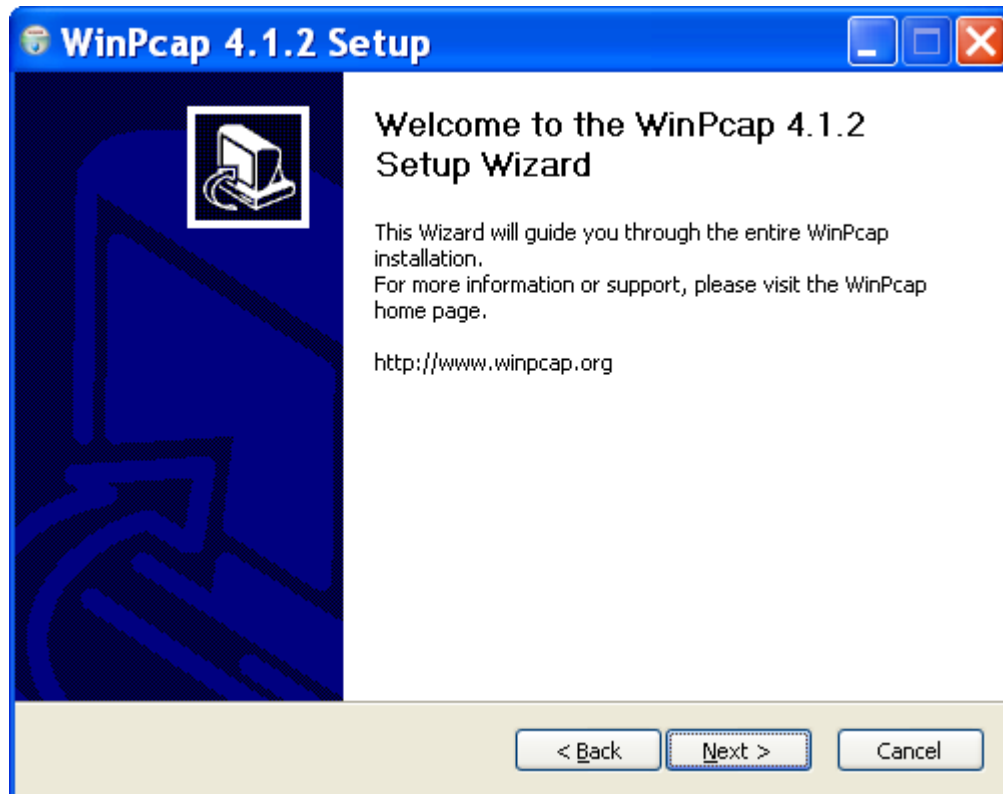
Portions of this software uses WinPcap (<http://www.winpcap.org>)  
Copyright (c) 1999 - 2005 NetGroup, Politecnico di Torino (Italy).  
Copyright (c) 2005 - 2010 CACE Technologies, Davis (California).  
All rights reserved.

Click on 'Next to continue



# USB CopyNotify! (Version 2.7)

## Server INSTALLATION GUIDE



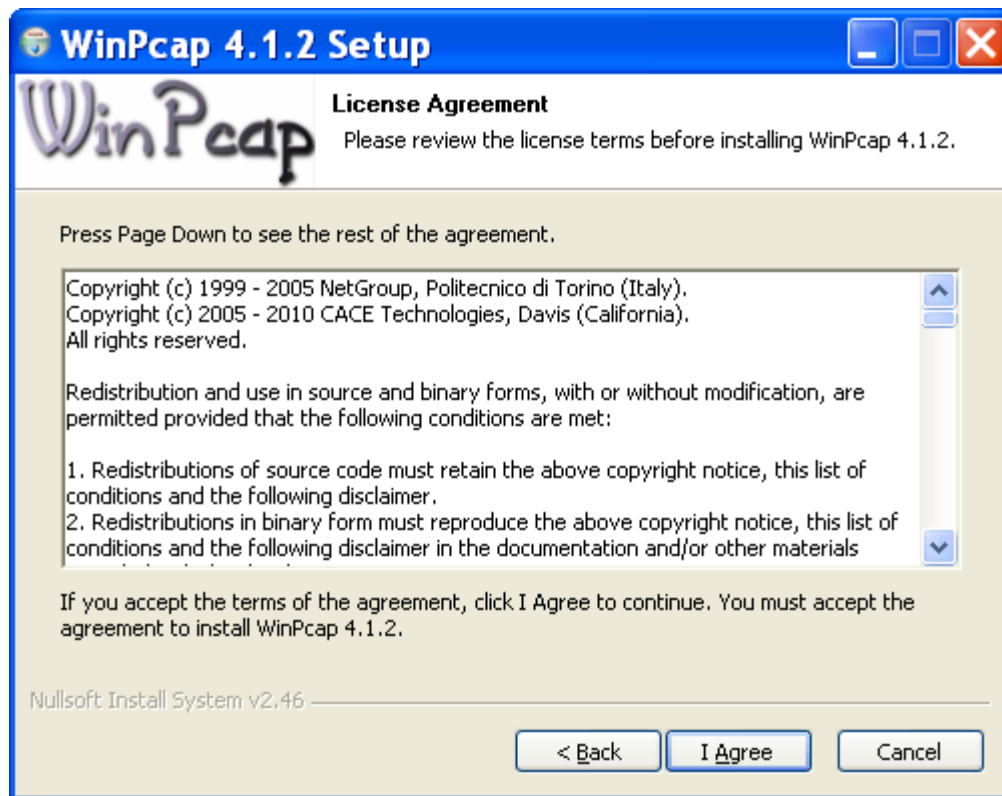
Click Next to continue..



## USB CopyNotify! (Version 2.7)

### Server INSTALLATION GUIDE

The license agreement will be displayed (as shown below) which will need to be reviewed and accepted by the user. Once the license agreement has been reviewed click on "I Agree"

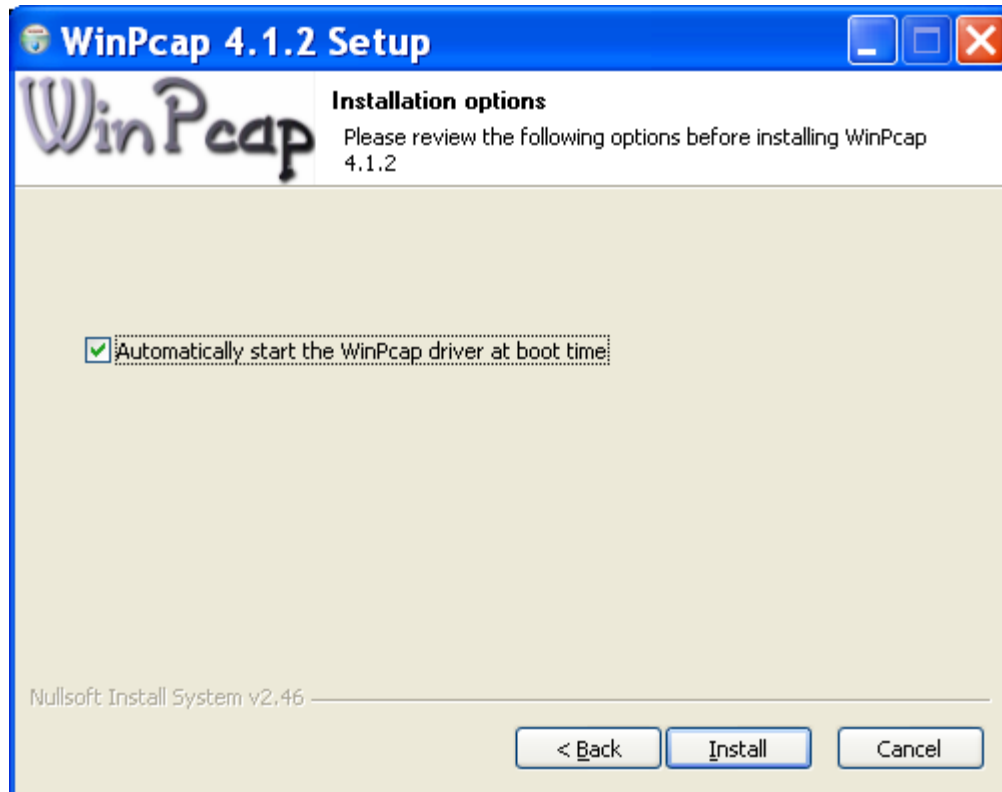


Click on 'I Agree' .....



# USB CopyNotify! (Version 2.7)

## Server INSTALLATION GUIDE

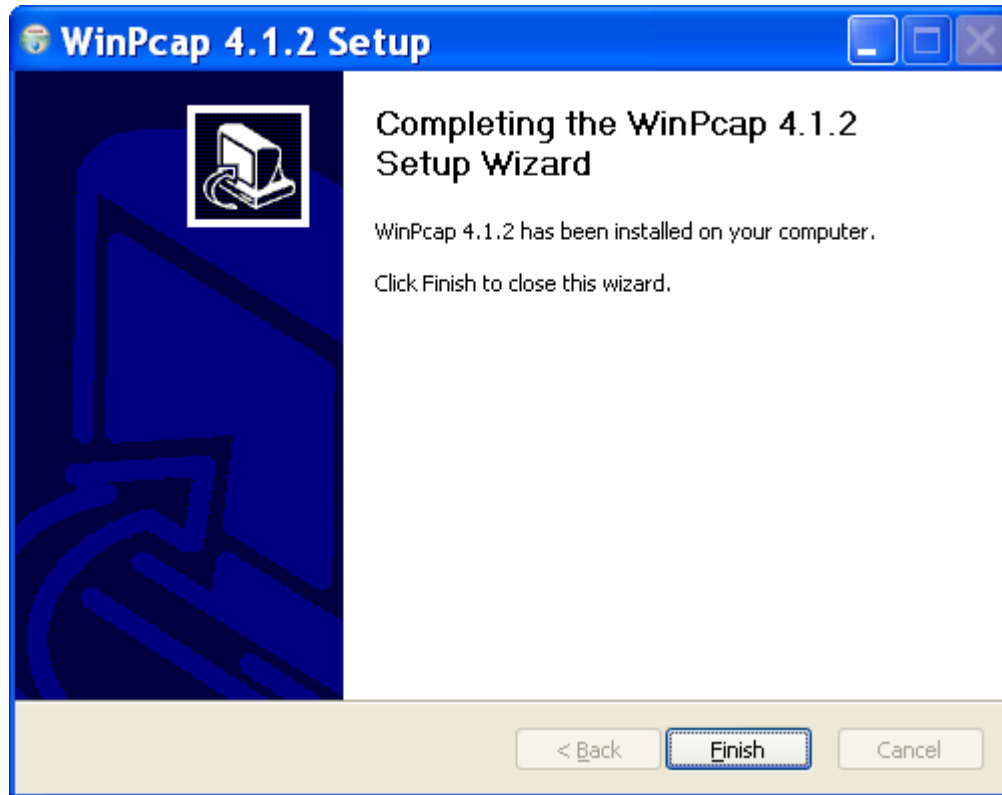


Click on 'Install'...



# USB CopyNotify! (Version 2.7)

## Server INSTALLATION GUIDE



Click on 'Finish' ....



# USB CopyNotify! (Version 2.7)

## Server INSTALLATION GUIDE

### Configure Monitoring Setting of USB CopyNotify! On Server

**Note:** The following configuration can also be done later via 'Client Settings' options of USB CopyNotify! Server. To skip this section of the Install please directly click on 'OK' and proceed with the installation.

Since the USB CopyNotify! Configuration is for the same machine LOCALHOST is specified as the SERVER MACHINE NAME by default.

Server

IP Address  Machine Name localhost

Block USB

Block USB Drive  Unblock USB Drive White List

USB Drive Monitoring

Disable USB Drive Monitoring For - Drive List

USB Drive Access

Make USB Drive Read-only

Disable AutoRun

Disable AutoRun

Save Energy Time

Select the time 30 min

System Shutdown Time ( 24 Hour Format )

Time ( Hr ) None Time ( Min ) None

Attachment

Block Email Attachment Sending

Send Offline Message

Send offline message(s)

Other Devices

Disable CD/DVD Drives  Disable Bluetooth Devices  Disable Modem Devices

OK

Click on ' OK' to continue ...



## USB CopyNotify! (Version 2.7)

### Server INSTALLATION GUIDE

#### Completion of Configuration

Once all the configuration has been completed , click on 'OK' and the following screen will appear.



Click on “Finish” to complete the installation of the Server Component of USB CopyNotify!



# USB CopyNotify! (Version 2.7)

## Server INSTALLATION GUIDE

### USB CopyNotify! System Tray Icon

On successful completion of the installation, the USB CopyNotify! Server Icon will appear in the System Tray as shown below

