



## Tutorial on using the 'White List' Feature of USB CopyNotify! based on Serial Number of that device.

### Tutorial on using the 'White List' Feature of USB CopyNotify! based on Serial Number of that device.

#### **Note:**

When you set USB CopyNotify! Client to 'Block USB', all USB devices are blocked.

However a scenario might arise when you want to use 'Block USB' feature but would at the same time allow certain authorized USB devices/drives.

This can be done using the feature of 'White Lists'. You start by blocking ALL devices and then add the information of devices (White Listed) that should be allowed to override the 'Block' Setting

Following are the steps

Go to the computer that has the USB CopyNotify! Client Loaded loaded. Please remove any already inserted devices.

#### **Step 1**

Open Explorer/My Computer and go to

C:\Program Files\CygNET Systems Pvt. Ltd\USB CopyNotify!

#### **Step 2**

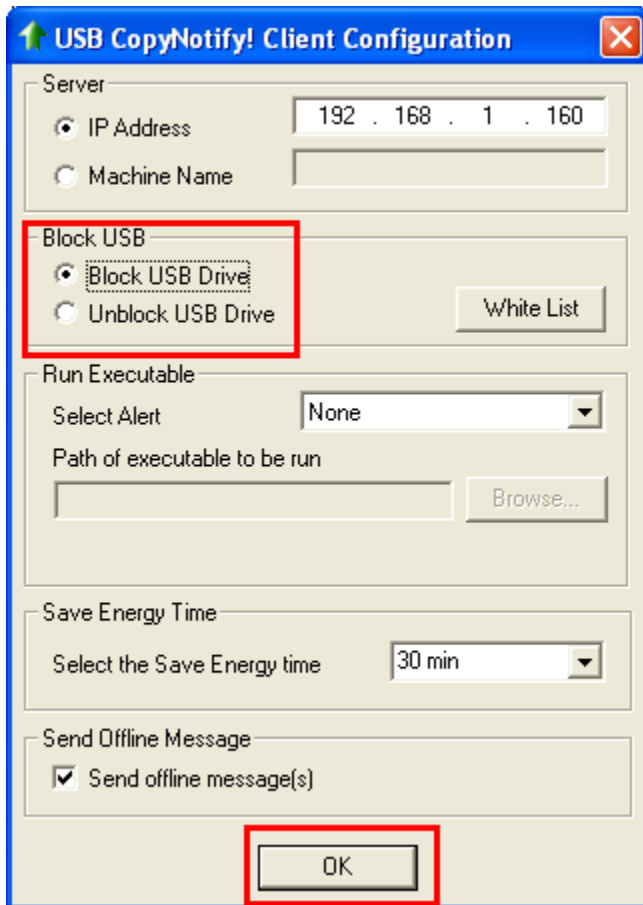
Double Click and run USBCopyNotify\_IPConfig.exe which exists in this directory. You will see a dialog box as shown in Step 3

## Tutorial on using the 'White List' Feature of USB CopyNotify! based on Serial Number of that device.

### Step 3

The Client Configuration Dialog Box will appear.

Click on Block USB and Click on 'OK'

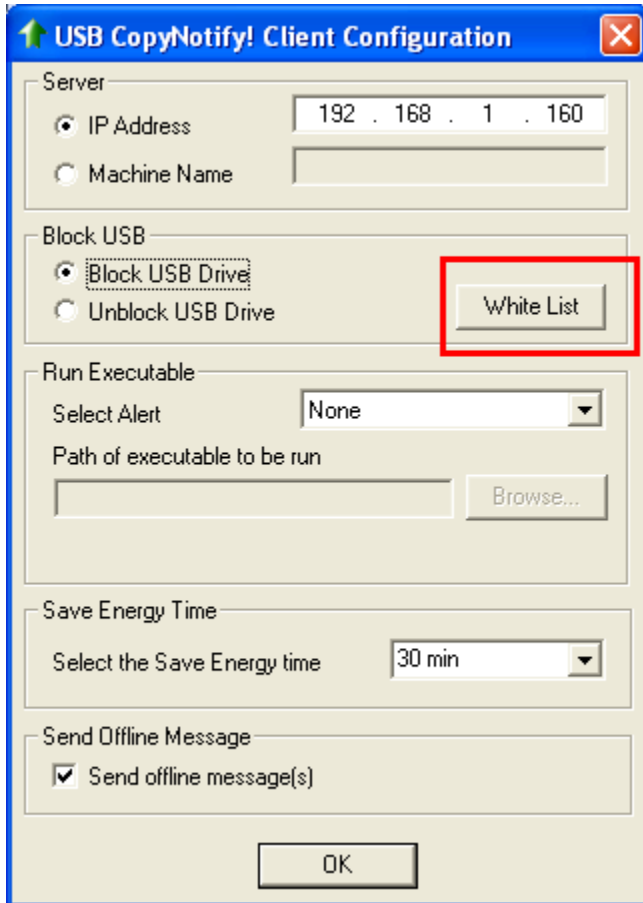


**This setting will now BLOCK ALL Devices**

## Tutorial on using the 'White List' Feature of USB CopyNotify! based on Serial Number of that device.

### Step 4

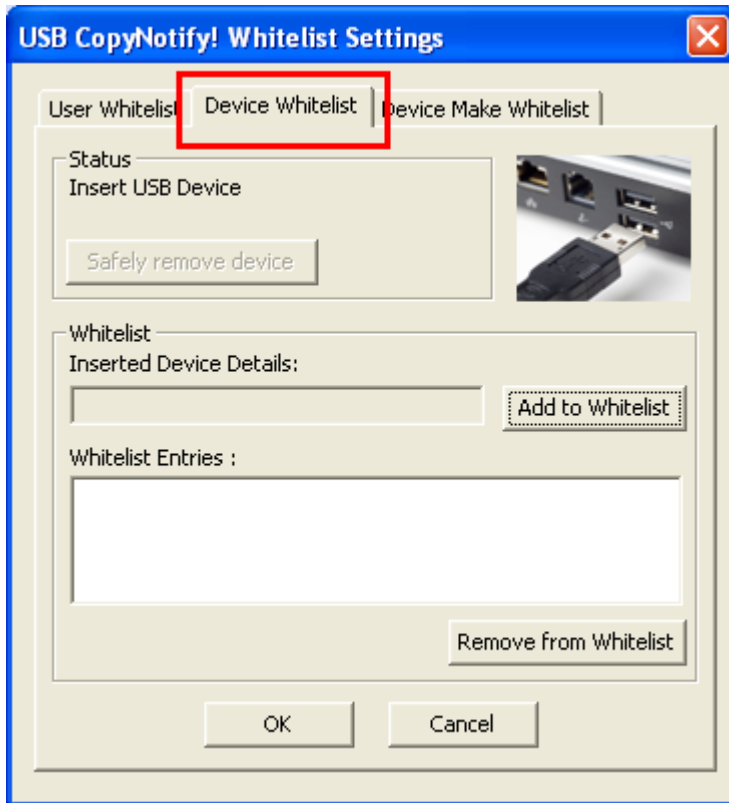
Double Click and run USBCopyNotify\_IPConfig.exe AGAIN and you will see the same client settings dialog box and now click on White List as shown below:



## Tutorial on using the 'White List' Feature of USB CopyNotify! based on Serial Number of that device.

### Step 5

Clicking on White List button will open another dialog box as shown below. Click on the 'Device Whitelist TAB'

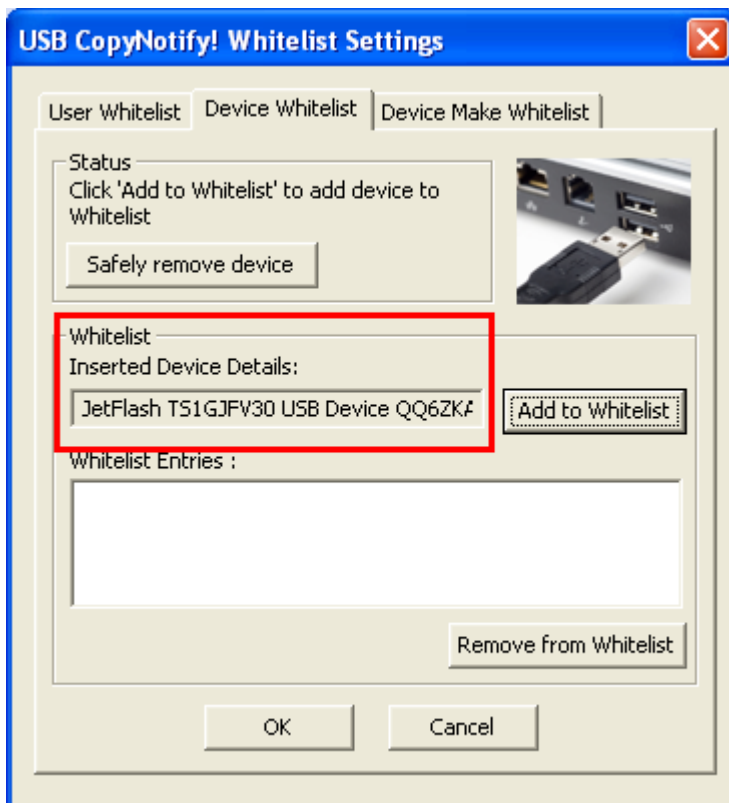


## Tutorial on using the 'White List' Feature of USB CopyNotify! based on Serial Number of that device.

### Step 6

Now insert the USB device which you wish to White List i.e. over – ride the Block USB setting i.e. all devices will be blocked except this device.

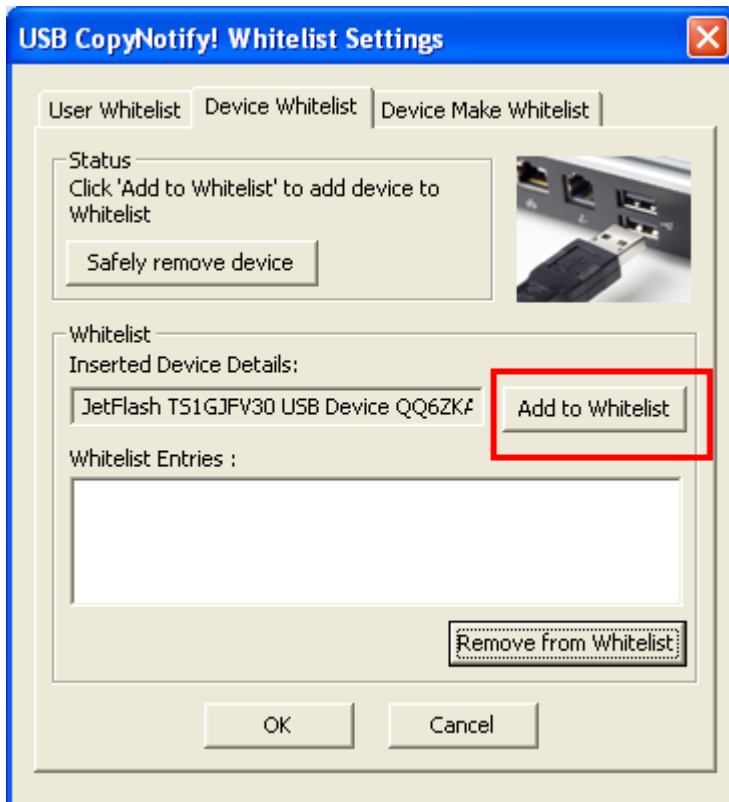
As soon as you insert the device, you will see the device details in the 'Inserted Device Details' Area (as shown in the figure below)



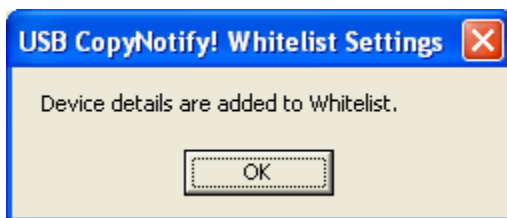
## Tutorial on using the 'White List' Feature of USB CopyNotify! based on Serial Number of that device.

### Step 7

Now click on the 'Add to Whitelist' Button as shown in the figure below.

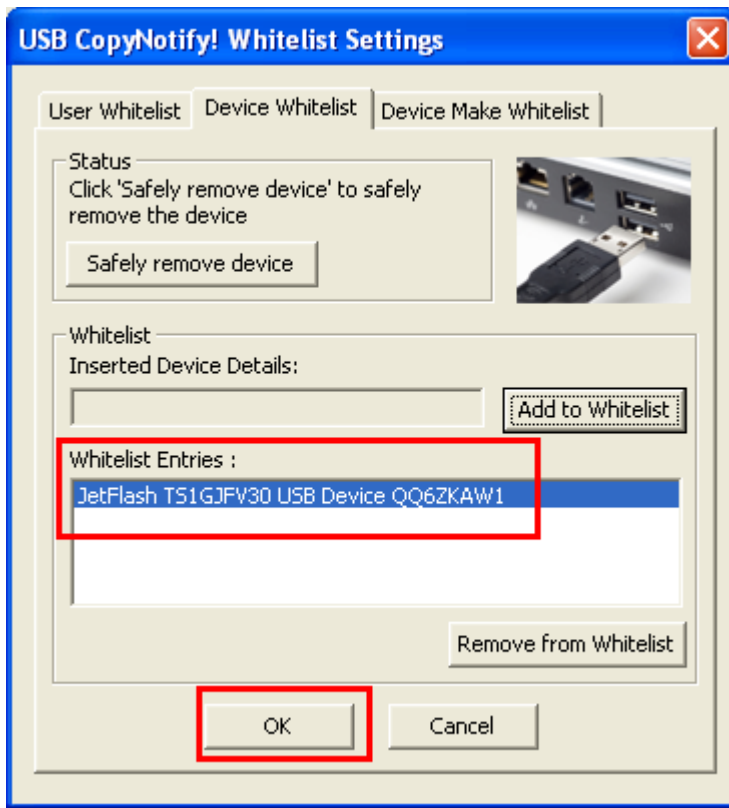


You will get the following notification.



## Tutorial on using the 'White List' Feature of USB CopyNotify! based on Serial Number of that device.

The device details will be now added to the 'White List Entries' as shown below. Click on the OK button (also shown on the figure below ..)



## Tutorial on using the 'White List' Feature of USB CopyNotify! based on Serial Number of that device.

### Step 8

The Client Configuration Screen will be appear again and click on "OK" as shown in the figure below.

USB CopyNotify! Client Configuration

Server

IP Address    192 . 168 . 1 . 160

Machine Name

Block USB

Block USB Drive    White List

Unblock USB Drive

Run Executable

Select Alert    None

Path of executable to be run

Browse...

Save Energy Time

Select the Save Energy time    30 min

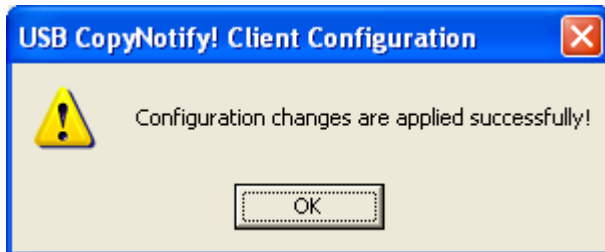
Send Offline Message

Send offline message(s)

OK

## Tutorial on using the 'White List' Feature of USB CopyNotify! based on Serial Number of that device.

This will be a notification screen as follows and client configuration screen will disappear



### Quick Review

What you have now currently done is turned on the "Block USB" feature but also "White Listed " one particular device on the basis of that serial number.

Now with this setting all devices will be blocked except that particular specified USB device.