



USB CopyNotify! (Ver. 1.6)

Control & Monitor USB Device Usage
INSTALLATION GUIDE

Index

1. Introduction	2
2. USB CopyNotify! Server & Client Installation	3
Selecting Server & Client Option.....	5
Configuration of USB CopyNotify! Client.....	6
Specifying of USB CopyNotify! Server.....	6
Blocking USB.....	7
Running Executable on Notification or Alert.....	8
Configuration of Save Energy Alert.....	10
3. USB CopyNotify! Client ONLY Installation	12
Selecting Client Option.....	15
Specifying of USB CopyNotify! Server.....	16
Blocking USB	17
Running Executable on Notification or Alert	18
Configuration of Save Energy Alert	20
4. USB CopyNotify! Server Silent Installation with command line parameters	22
5. USB CopyNotify! Client Silent Installation with command line parameters	22
6. USB CopyNotify! Silent Un- installation with command line parameters	23
7. USB CopyNotify! Un- installation via Control Panel	23



USB CopyNotify! (Ver. 1.6)

Control & Monitor USB Device Usage
INSTALLATION GUIDE

Introduction

USB CopyNotify! is a security software that notifies a user when USB removable storage media such as USB Flash Drives / Memory Sticks, USB Pen Drives etc. are used on any computer on the office network. As soon as there is any USB activity, the software detects this activity and notifies the user of the same immediately. It also takes ACTIONS on the base of these notifications.

Download/Evaluation CD and Install Instructions

Download

Download the software from <http://www.usbcopynotify.com/files/UCNDownload.asp>
The software downloaded will have the name USBCopyNotify!.exe.

Evaluation CD

The software will also be available on the evaluation CD. There is a file called USBCopyNotify!.exe in the root/main directory of the CD

Note:

The evaluation is a fully functional build which expires on the 30th day after the day the software was installed.

Components of USB CopyNotify!

USB CopyNotify! Client Component:

This component is installed on the computers on the network that need to be monitored for USB Activity.

File Name : USBCopyNotify!.exe

USB CopyNotify! Server Component:

This component is installed on the computer that will actually display the alerts of any USB activity.

File Name : USBCopyNotify!.exe

A mass remote deployment Wizard is also available for download as well on the evaluation CD which will allow the user to deploy multiple USB CopyNotify! clients from the USB CopyNotify! Server without actually having to actually go to each machine to install USB CopyNotify!. Please refer to the Mass Deployment Wizard Guide for further details.

Supported Operating Systems

Windows XP (SP2) , Windows 2003 , Windows Vista



USB CopyNotify! (Ver. 1.6)

Control & Monitor USB Device Usage
INSTALLATION GUIDE

USB CopyNotify! Server & Client Installation

Important Installation Tip :

Before Installing the USB CopyNotify! Server, please ensure that if a firewall is installed the following ports need to be opened.

- Port 40007 for UDP
- Port 5555 for UDP
- Port 5553 for TCP.

These ports are required for both the running of USB CopyNotify! Server & Client. The USB CopyNotify! Server Component needs to be installed on the computer that will alert you of USB Activity on the Network

Double Click on USBCopyNotify!.exe to begin the installation.



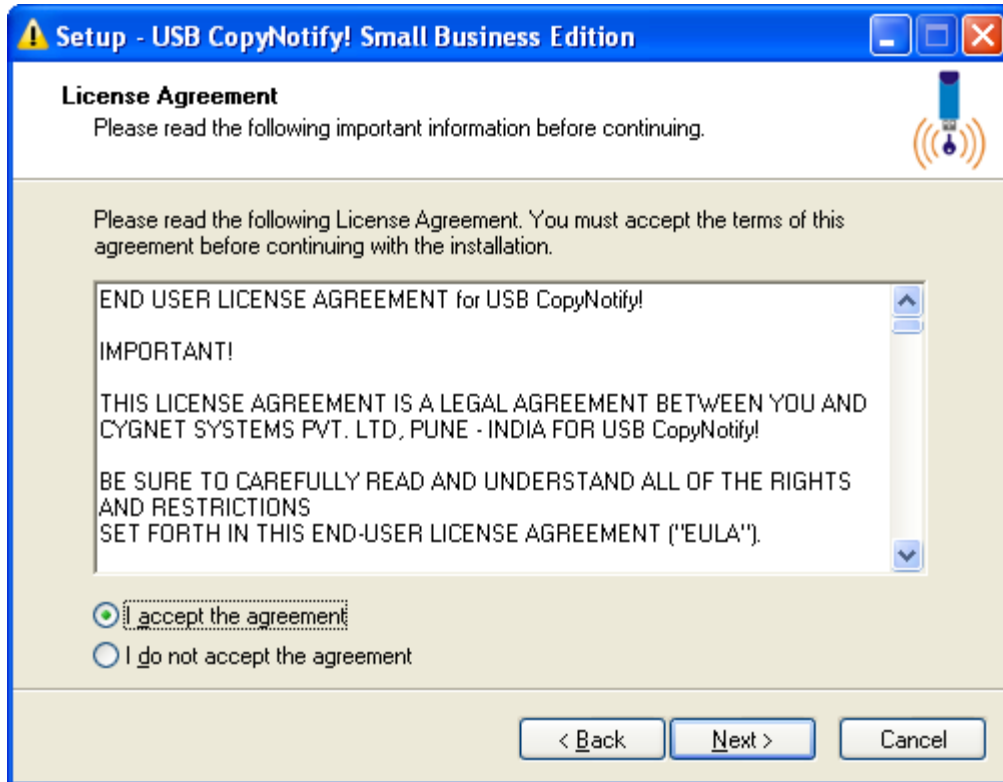
Click Next to continue....



USB CopyNotify! (Ver. 1.6)

Control & Monitor USB Device Usage
INSTALLATION GUIDE

The license agreement will be displayed (as shown below) which will need to be reviewed and accepted by the user. Once the license agreement has been reviewed click on “I accept the agreement”



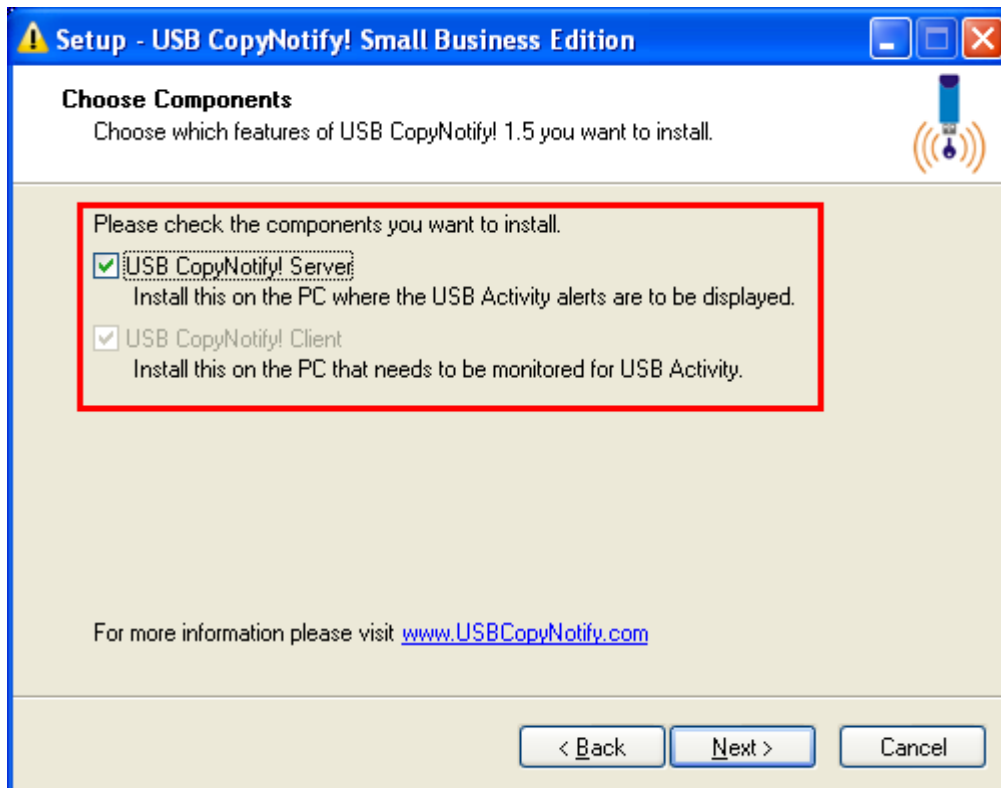
Click Next to Continue



USB CopyNotify! (Ver. 1.6)

Control & Monitor USB Device Usage
INSTALLATION GUIDE

Select USB CopyNotify! Server option (as shown below)



Note:

By default USB CopyNotify! Client will also be loaded on the same machine

Click Next to continue.



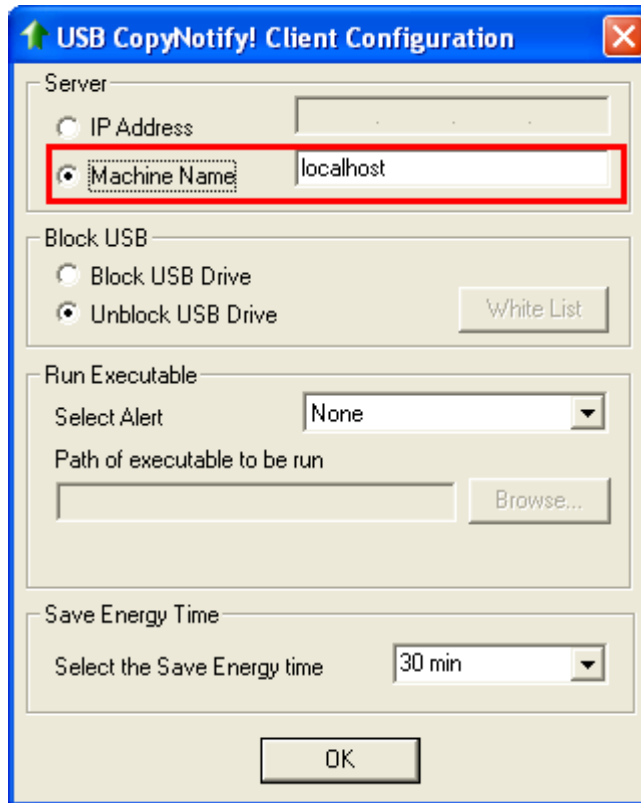
USB CopyNotify! (Ver. 1.6)

Control & Monitor USB Device Usage
INSTALLATION GUIDE

Configuration of USB CopyNotify! Client : Specifying of USB CopyNotify! Server

The USB CopyNotify! Client needs to know the location of the USB CopyNotify! Server so that it can send the notification/alerts to it. Hence you will be prompted to enter the IP Address or Machine Name of the computer on which the USB CopyNotify! Server Component has been installed. In this case, it is on the same machine as the USB CopyNotify! Server hence LOCALHOST is specified as the SERVER MACHINE NAME by default.

Below figure shows specifying location by IP Address.



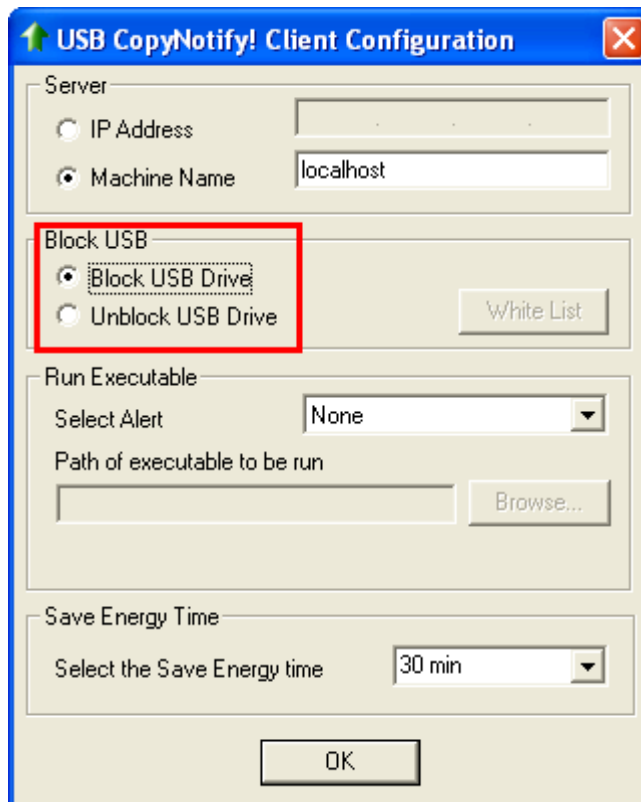


USB CopyNotify! (Ver. 1.6)

Control & Monitor USB Device Usage
INSTALLATION GUIDE

Configuration of USB CopyNotify! Client : **Blocking USB**

You can disable usage of the USB port itself by enabling Block USB Drive as shown in the figure below.





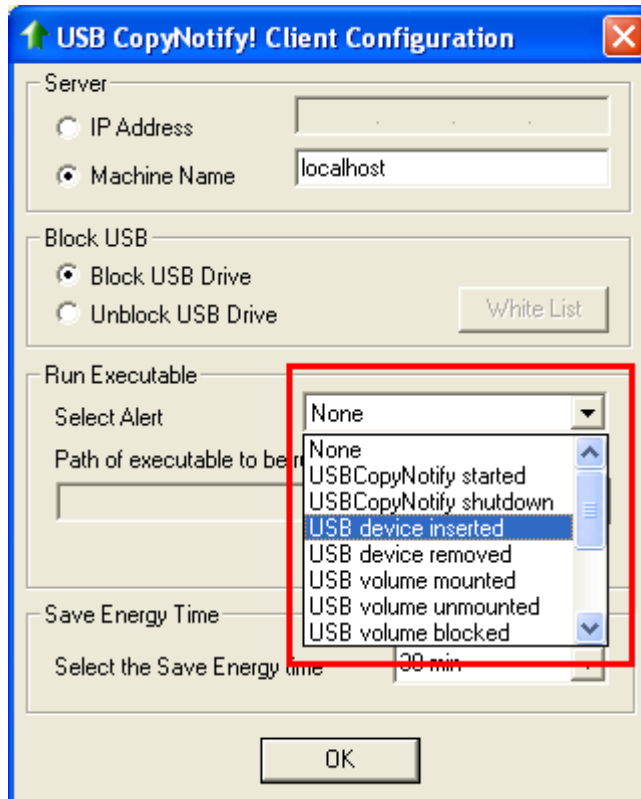
USB CopyNotify! (Ver. 1.6)

Control & Monitor USB Device Usage
INSTALLATION GUIDE

Configuration of USB CopyNotify! Client : **Running Executable on Notification or Alert**

You can configure USB CopyNotify! to run an EXECUTABLE on a particular notification / alert. You will need to select the notification and specify the filename to be run with path & optional parameters

Below figure shows the selection of notification



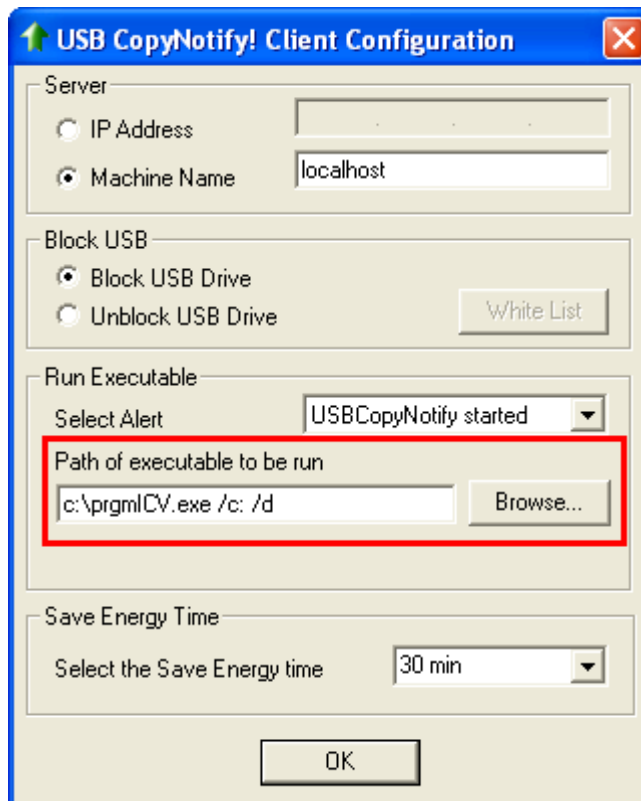


USB CopyNotify! (Ver. 1.6)

Control & Monitor USB Device Usage
INSTALLATION GUIDE

Configuration of USB CopyNotify! Client : **Running Executable on Notification or Alert**

Below figure shows the file and its parameters that is to be executed.



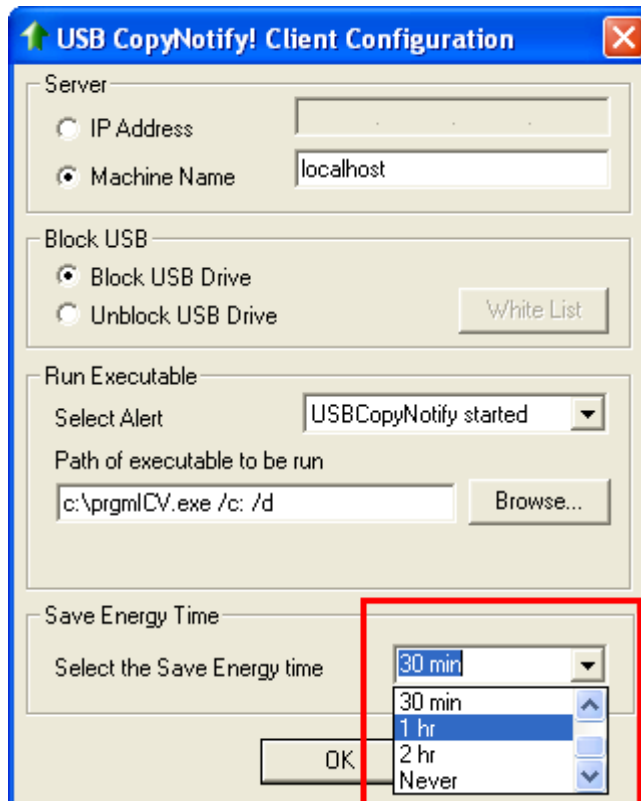


USB CopyNotify! (Ver. 1.6)

Control & Monitor USB Device Usage
INSTALLATION GUIDE

Configuration of USB CopyNotify! Client : Configuration of Save Energy Alert

The Save Energy Alert is sent every time the computer has been idle for a specified period of time. You can specify the System Idle time after which the Save Energy Alert will be sent as shown in the figure below.





USB CopyNotify! (Ver. 1.6)

Control & Monitor USB Device Usage
INSTALLATION GUIDE

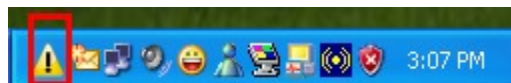
USB CopyNotify! Server & Client Installation: **Completing Setup**

The Install will automatically configure, load and start both the Server & Client Component of USB CopyNotify! and the screen shown below will be seen.



Click Finish to complete the Installation

The Server Component ICON of USB CopyNotify! can now be also seen in the System Tray as shown below.





USB CopyNotify! (Ver. 1.6)

Control & Monitor USB Device Usage
INSTALLATION GUIDE

USB CopyNotify! Client ONLY Installation

Important Installation Tip :

Before Installing the USB CopyNotify! Server, please ensure that if a firewall is installed the following ports need to be opened.

Port 40007 for UDP
Port 5555 for UDP
Port 5553 for TCP.

These ports are required for both the running of USB CopyNotify! Server & Client.

Security Tip:

If the users have all administrative privileges on their computers then attempts can be made by the user to kill, switch off the client component or change its settings thus rendering the monitoring of USB activity in-effective. Hence in order to counter the same, it is advised to remove administrative privileges for users on computers that are being monitored for USB activity hence disallowing the users to kill/shut down the client component or change its configuration.

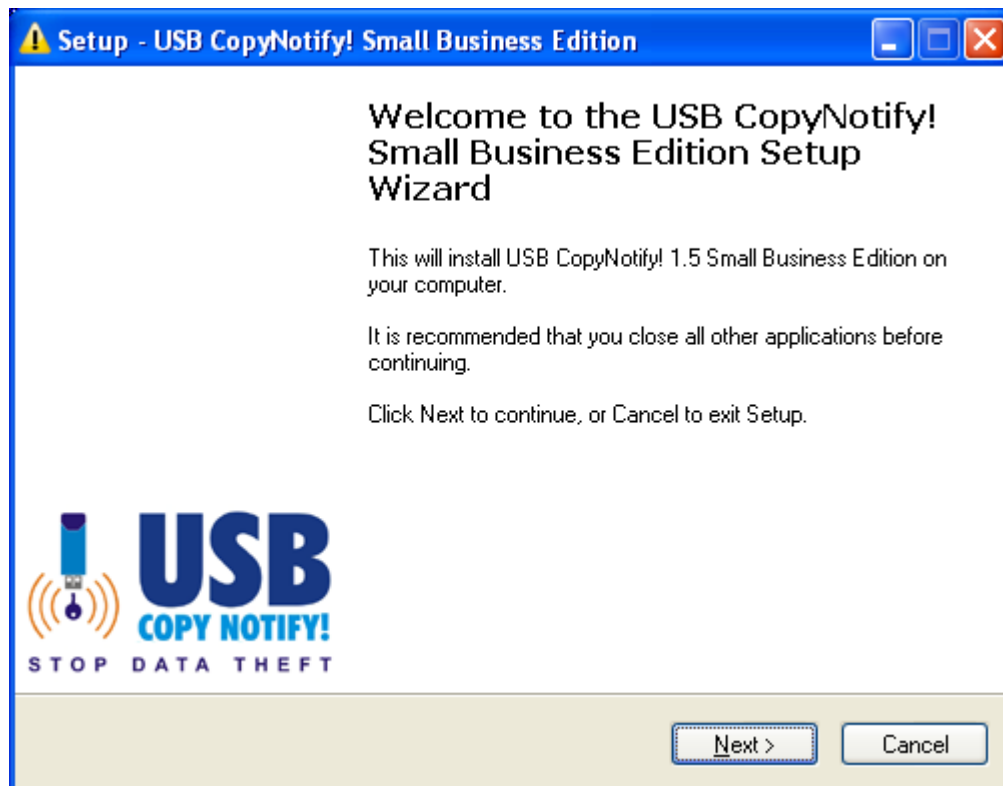


USB CopyNotify! (Ver. 1.6)

Control & Monitor USB Device Usage
INSTALLATION GUIDE

The Client Component of USB CopyNotify! needs to be installed on all the computers on the office network that need to be monitored for USB Activity.

Double Click on USBCopyNotify!.exe to begin the installation.



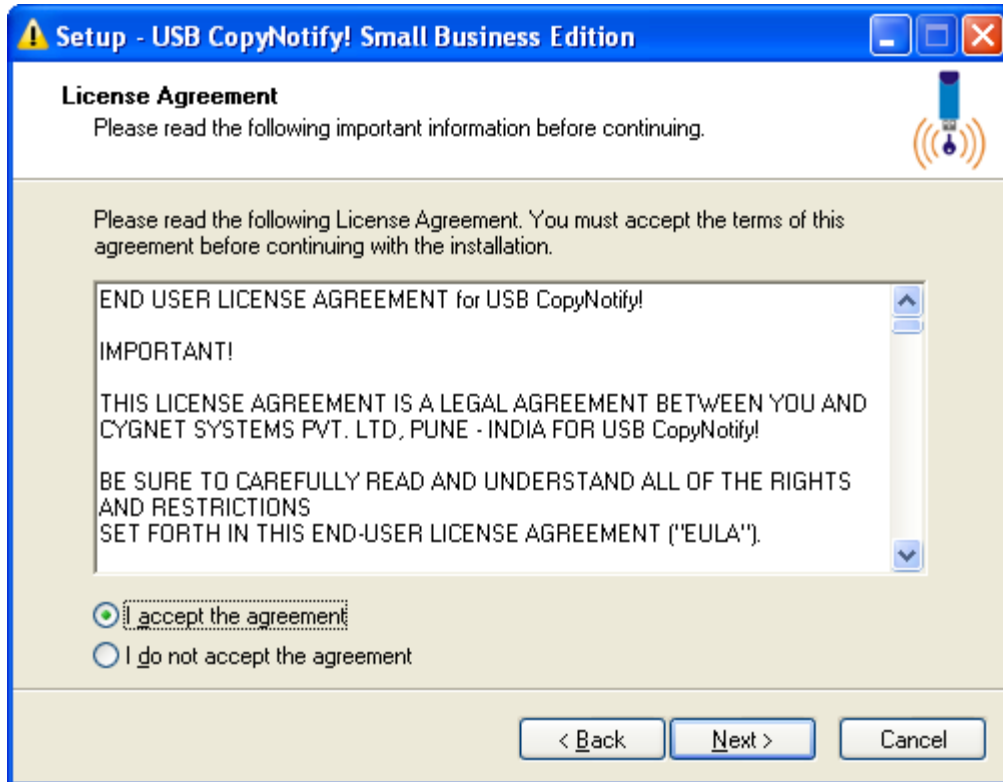
Click Next to continue.



USB CopyNotify! (Ver. 1.6)

Control & Monitor USB Device Usage
INSTALLATION GUIDE

The license agreement will be displayed (as shown below) which will need to be reviewed and accepted by the user. Once the license agreement has been reviewed click on “I accept the agreement”



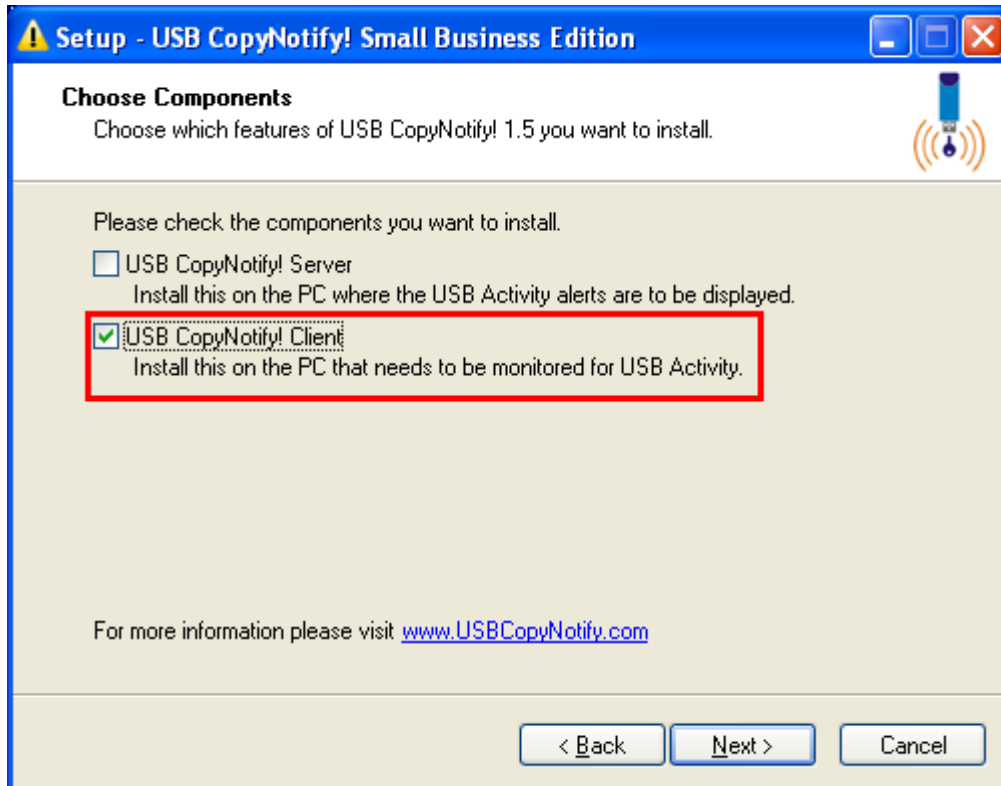
Click Next to Continue.



USB CopyNotify! (Ver. 1.6)

Control & Monitor USB Device Usage
INSTALLATION GUIDE

Select USB CopyNotify! Client option (as shown below)



Click Next to continue..



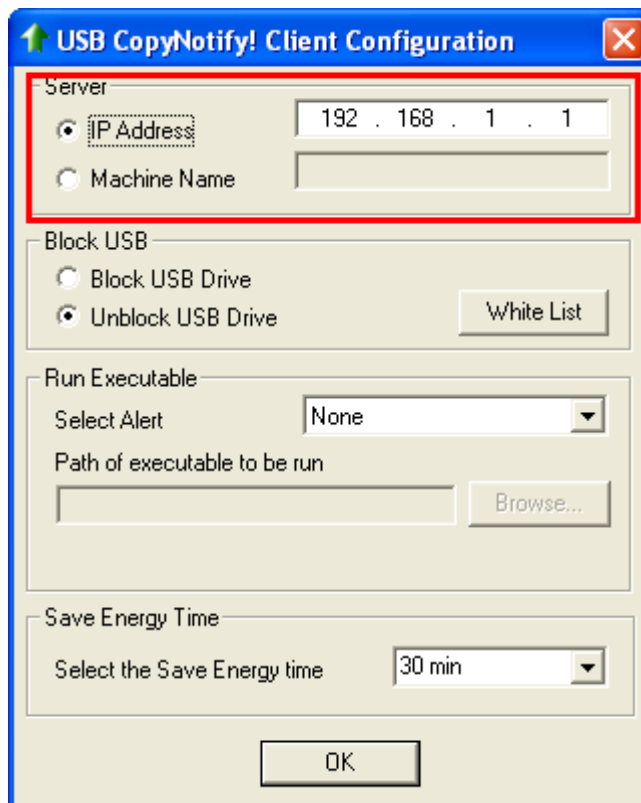
USB CopyNotify! (Ver. 1.6)

Control & Monitor USB Device Usage
INSTALLATION GUIDE

USB CopyNotify! Client Installation: Specifying of USB CopyNotify! Server

The USB CopyNotify! Client needs to know the location of the USB CopyNotify! Server so that it can send the notification/alerts to it. Hence you will be prompted to enter the IP Address or Machine Name of the computer on which the USB CopyNotify! Server Component has been installed.

Below figure shows specifying location by IP Address.



Note:

You can also specify the location of the USB CopyNotify! Server by machine name. If you are installing both USB CopyNotify! Server and Client on the same machine, then you can specify the Server IP Address as LOCALHOST.

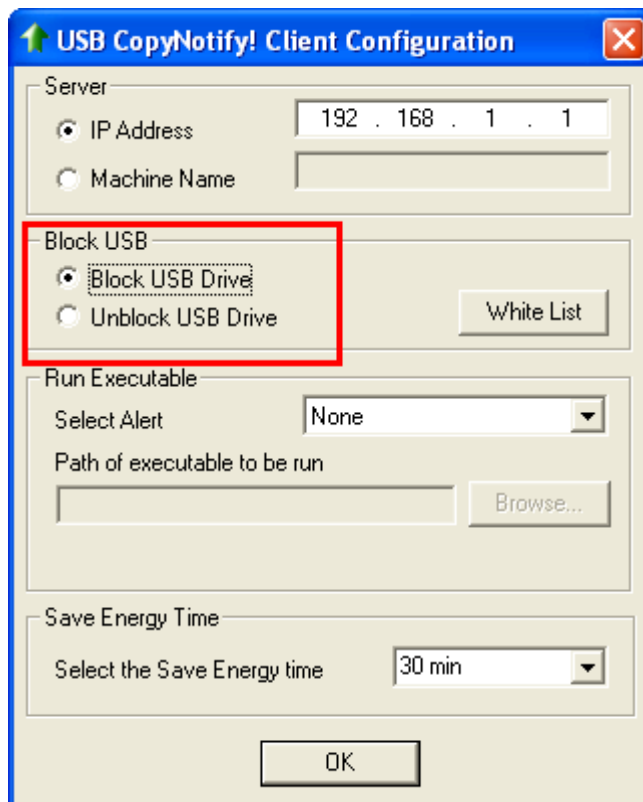


USB CopyNotify! (Ver. 1.6)

Control & Monitor USB Device Usage
INSTALLATION GUIDE

USB CopyNotify! Client Installation: **Blocking USB**

You can disable usage of the USB port itself by enabling Block USB Drive as shown in the figure below.





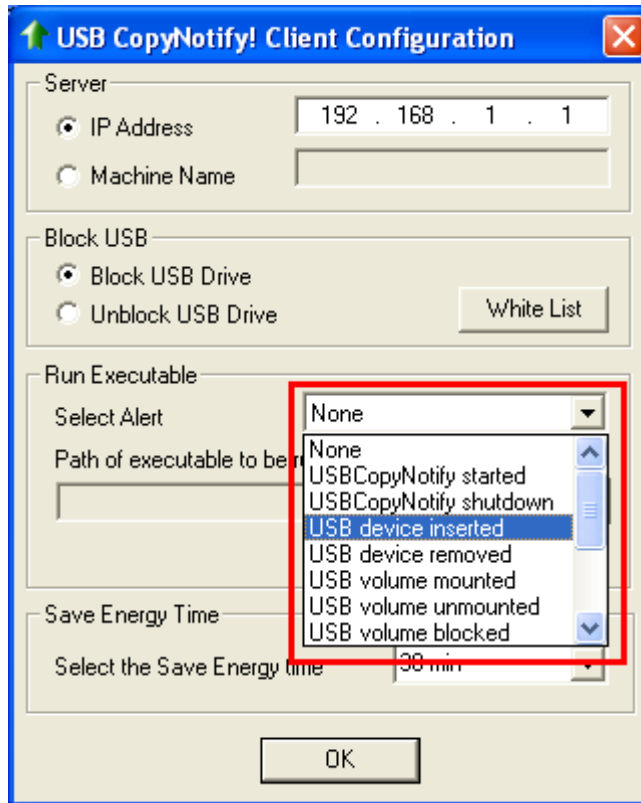
USB CopyNotify! (Ver. 1.6)

Control & Monitor USB Device Usage
INSTALLATION GUIDE

USB CopyNotify! Client Installation: Running Executable on Notification or Alert

You can configure USB CopyNotify! to run an EXECUTABLE on a particular notification / alert. You will need to select the notification and specify the filename to be run with path & optional parameters

Below figure shows the selection of notification



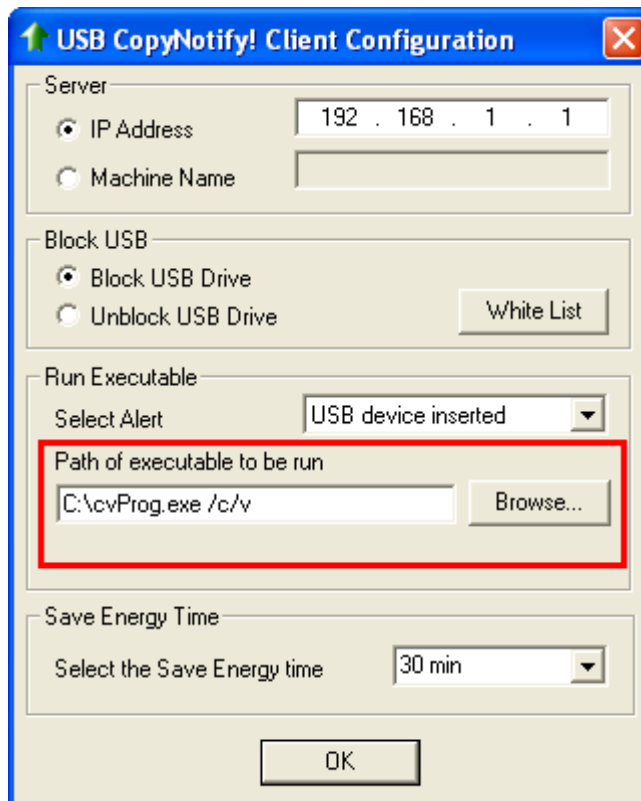


USB CopyNotify! (Ver. 1.6)

Control & Monitor USB Device Usage
INSTALLATION GUIDE

USB CopyNotify! Client Installation: **Running Executable on Notification or Alert**

Below figure shows the file and its parameters that is to be executed.



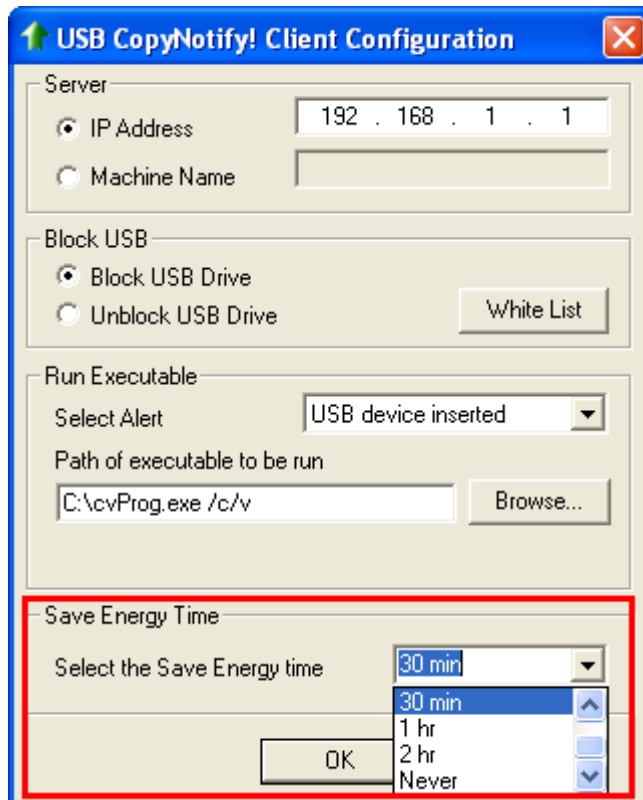


USB CopyNotify! (Ver. 1.6)

Control & Monitor USB Device Usage
INSTALLATION GUIDE

USB CopyNotify! Client Installation: Configuration of Save Energy Alert

The Save Energy Alert is sent every time the computer has been idle for a specified period of time. You can specify the System Idle time after which the Save Energy Alert will be sent as shown in the figure below.





USB CopyNotify! (Ver. 1.6)

Control & Monitor USB Device Usage
INSTALLATION GUIDE

USB CopyNotify! Client Installation: **Completing Setup**

The Install will automatically configure, load and start the Client Component of USB CopyNotify! and the screen shown below will be seen.



Click Finish to complete the Installation

After the Installation is complete the Client Component automatically loads itself as a service. It should be noted that the Client Component will be loaded every time Windows starts.



USB CopyNotify! (Ver. 1.6)

Control & Monitor USB Device Usage
INSTALLATION GUIDE

USB CopyNotify! Server Silent Installation with command line parameters

The USB CopyNotify! Server can be installed without any User Interaction using command line parameters as follows

```
USBCopyNotify!.exe /verysilent /server
```

USB CopyNotify! Client Silent Installation with command line parameters

The USB CopyNotify! Client can be installed without any User Interaction using command line parameters as follows

```
USBCopyNotify!.exe /verysilent /client [configuration parameters]
```

The configuration parameters are as follows
/serverIP=x.x.x.x --- for server name
/BlockUSB=x ---- 0 for dont block, 1 for block
/SaveEnergy=x ---time in minutes
/runexec=xxxxxx --- exe path
/runexecType=x ---0 to 13

the values for are runexecType

- 0=none
- 1= Started
- 2= Shutdown
- 3= Inserted
- 4= Removed
- 5=Mounted
- 6= Unmounted
- 7=Blocked-USB
- 8=Added
- 9=Deleted
- 10=Renamed
- 11=Modified
- 12=Save-Energy
- 13=System-Shutdown

Note : Installing the client with command line parameters is useful for mass/remote deployment of the client software using Group Policies.



USB CopyNotify! (Ver. 1.6)

Control & Monitor USB Device Usage
INSTALLATION GUIDE

USB CopyNotify! Silent Un- installation with command line parameters

The USB CopyNotify! software can be un-installed without any User Interaction using command line parameters as follows

USBCopyNotify!.exe /uninstall

USB CopyNotify! Un- installation via Control Panel

USB CopyNotify! Can be un-installed via Start/Settings/Control Panel/Add Remove Programs

Click on USB CopyNotify! Small Business Edition and click on Remove

Note:

For Vista

Start / Control Panel / Programs / Uninstall a Program

If classic control panel

Start / Control Panel / Programs and features

Select USB CopyNotify! Small Business Edition & Select UnInstall