



# USB CopyNotify! (Ver. 1.6)

Control & Monitor USB Device Usage  
REMOTE DEPLOYMENT WIZARD

## Index

1. Introduction.....	2
2. Installation.....	3
3. User Instructions.....	4
USB CopyNotify! Server IP Address.....	5
Add IP Address.....	6
Remove IP Address.....	7
Select ALL.....	8
De Select ALL.....	9
Install USB CopyNotify!.....	10
Un Install USB CopyNotify!.....	11
Install Status Check.....	12
Save.....	13
Exit.....	14



# USB CopyNotify! (Ver. 1.6)

Control & Monitor USB Device Usage  
REMOTE DEPLOYMENT WIZARD

## Introduction

USB CopyNotify! consists of 2 components, the USB CopyNotify! Server & the USB CopyNotify! Client.

The clients have to be loaded on all the machines that need to be monitored while the server is to be loaded on the machine on which you will be receive all the alerts and control the software.

If there are a large number of machines that need to have the client loaded, then it is more convenient to use the Remote Deployment Wizard. The remote deployment wizard has been created so as to help the user to remotely install USB CopyNotify! clients from a central location without having to physically go to each machine to complete the install.

The remote deployment wizard can be downloaded from

<http://www.usbcopynotify.com/downloads/RemoteDeploy.zip>

OR

The remote deployment wizard is available on the **Evaluation CD**. There is a file called RemoteDeploy.zip in the root/main directory of the **Evaluation CD**.

Once installed this Remote Deployment Wizard allows you

- to install USB CopyNotify! clients remotely.
- to un install USB CopyNotify! clients remotely.
- to check whether USB CopyNotify! client is running on a remote machine.

### Notes :

- This wizard will only work on USB CopyNotify!, Ver. 1.4 and above
- You will need to install the .NET Framework 2.0 which can be freely downloaded from the Microsoft site.
- The currently logged in user on the machine on which the Remote Deployment Wizard has been setup has to have full access on the remote machines on which the clients will be installed.
- Remote Access & Remote Execution needs to be enabled on all the remote machines on which the clients will be installed.



# USB CopyNotify! (Ver. 1.6)

Control & Monitor USB Device Usage  
REMOTE DEPLOYMENT WIZARD

## Installation

Once you have downloaded the remotedeploy.zip file, unzip the contents of the downloaded file into a newly created directory.

Copy the USBCopyNotify! Install (USBCopyNotify!.exe) into the above created directory.

Double Click on USBApplication.exe to start the Remote Deployment Wizard.



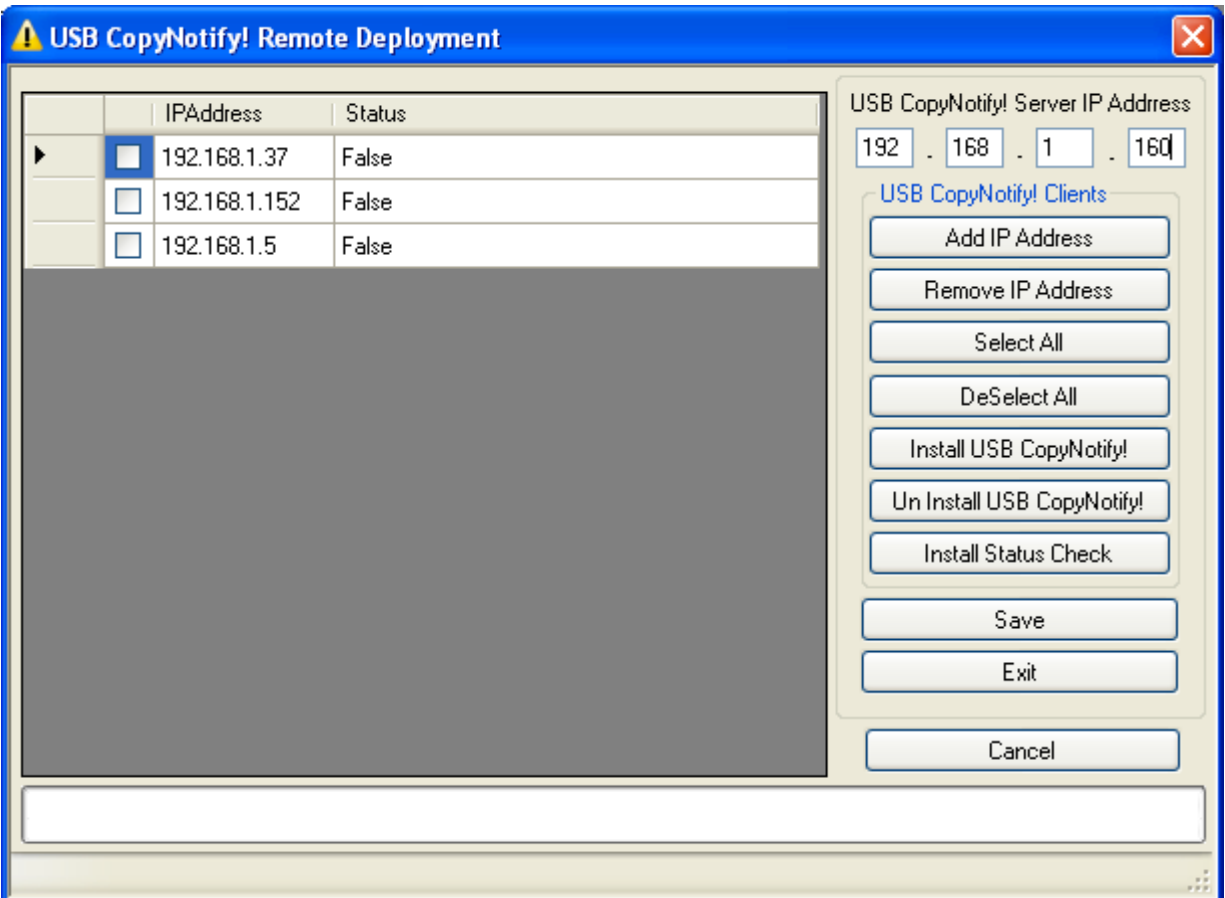
# USB CopyNotify! (Ver. 1.6)

Control & Monitor USB Device Usage  
REMOTE DEPLOYMENT WIZARD

## User Instructions

The deployment wizard User Interface is broken up into 2 main areas i.e. a display area on the Left Hand Side. This display area will be filled by the IP addresses of the machines as specified by the user on which USB CopyNotify! client is to be installed.

The Right Hand Side has all the controls that will operate on the list of IP Addresses that have been entered.



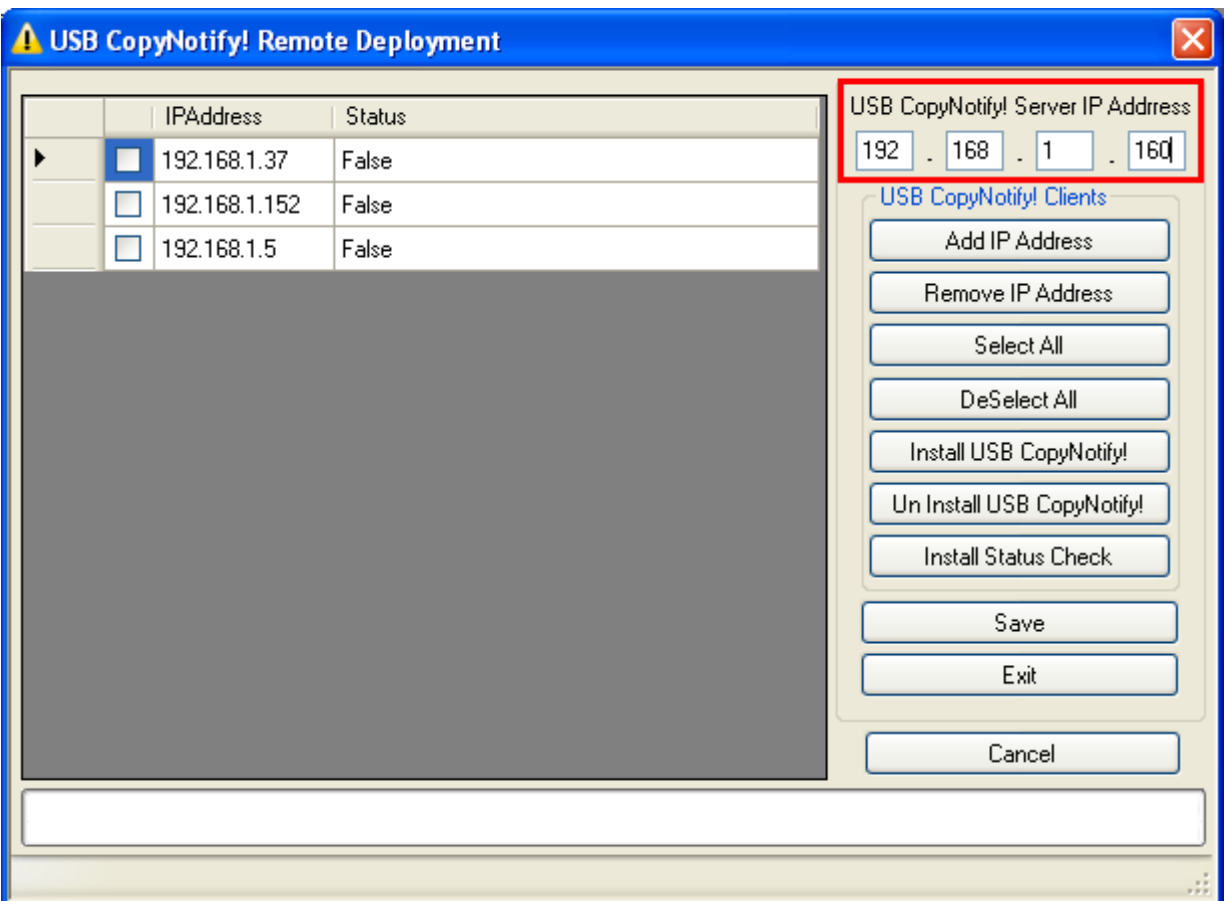


# USB CopyNotify! (Ver. 1.6)

Control & Monitor USB Device Usage  
REMOTE DEPLOYMENT WIZARD

## USB CopyNotify! Server IP Address

This is where the user will enter the IP Address of the machine on which USB CopyNotify! Server is installed. This is required while doing the remote installation of the clients so as to specify the location of USB CopyNotify! Server.





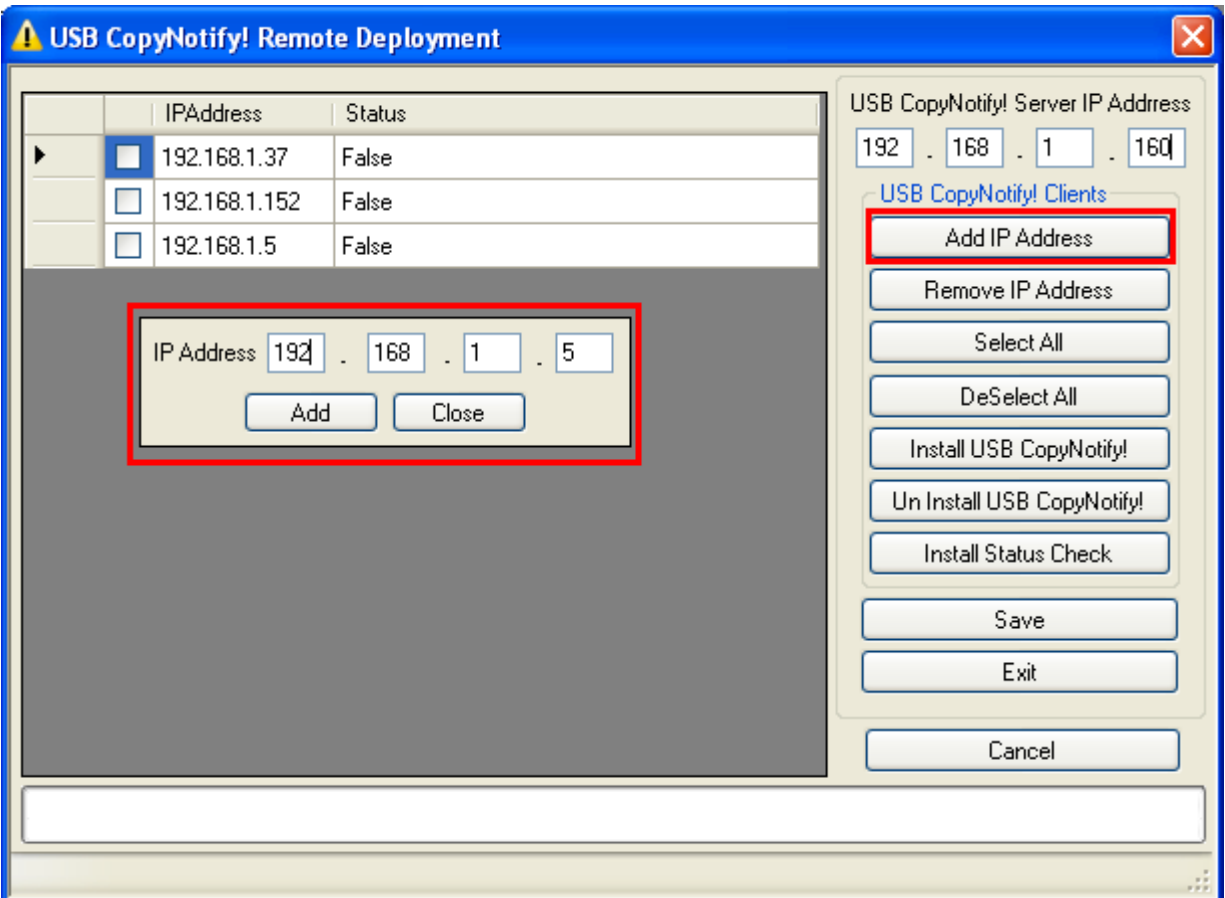
# USB CopyNotify! (Ver. 1.6)

Control & Monitor USB Device Usage  
REMOTE DEPLOYMENT WIZARD

## Add IP Address:

This allows you to add to the list of IP addresses of the machines on which you wish to install USB CopyNotify! Client. Clicking on it will open a small data entry dialog where you can enter the IP address.

When you click on ADD the IP address will be added to the list of IP addresses.





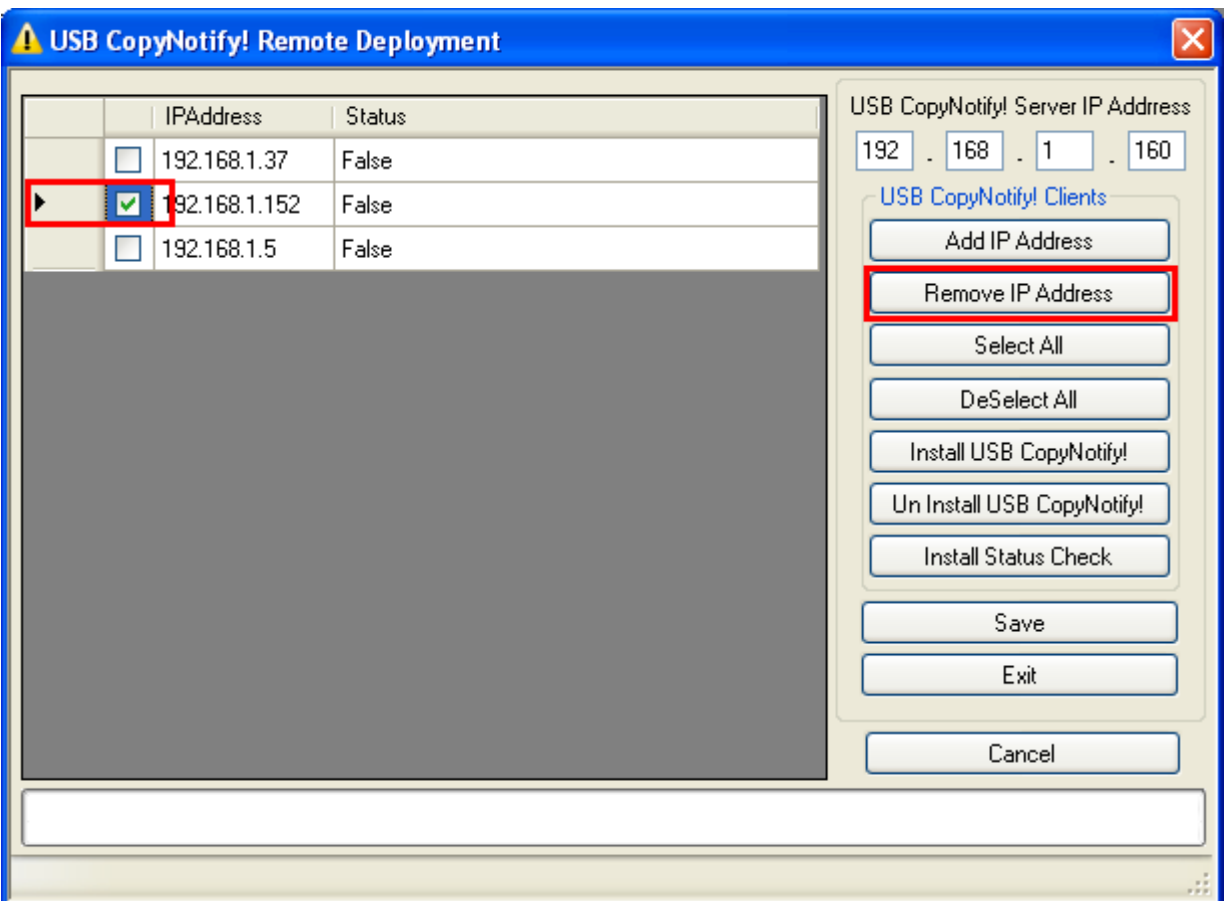
# USB CopyNotify! (Ver. 1.6)

Control & Monitor USB Device Usage  
REMOTE DEPLOYMENT WIZARD

## Remove IP Address:

This allows you to remove the IP address from the list.

In order to select the IP address to be removed you will need to click on the check box next to the IP address in the list and then click on Remove IP address.





# USB CopyNotify! (Ver. 1.6)

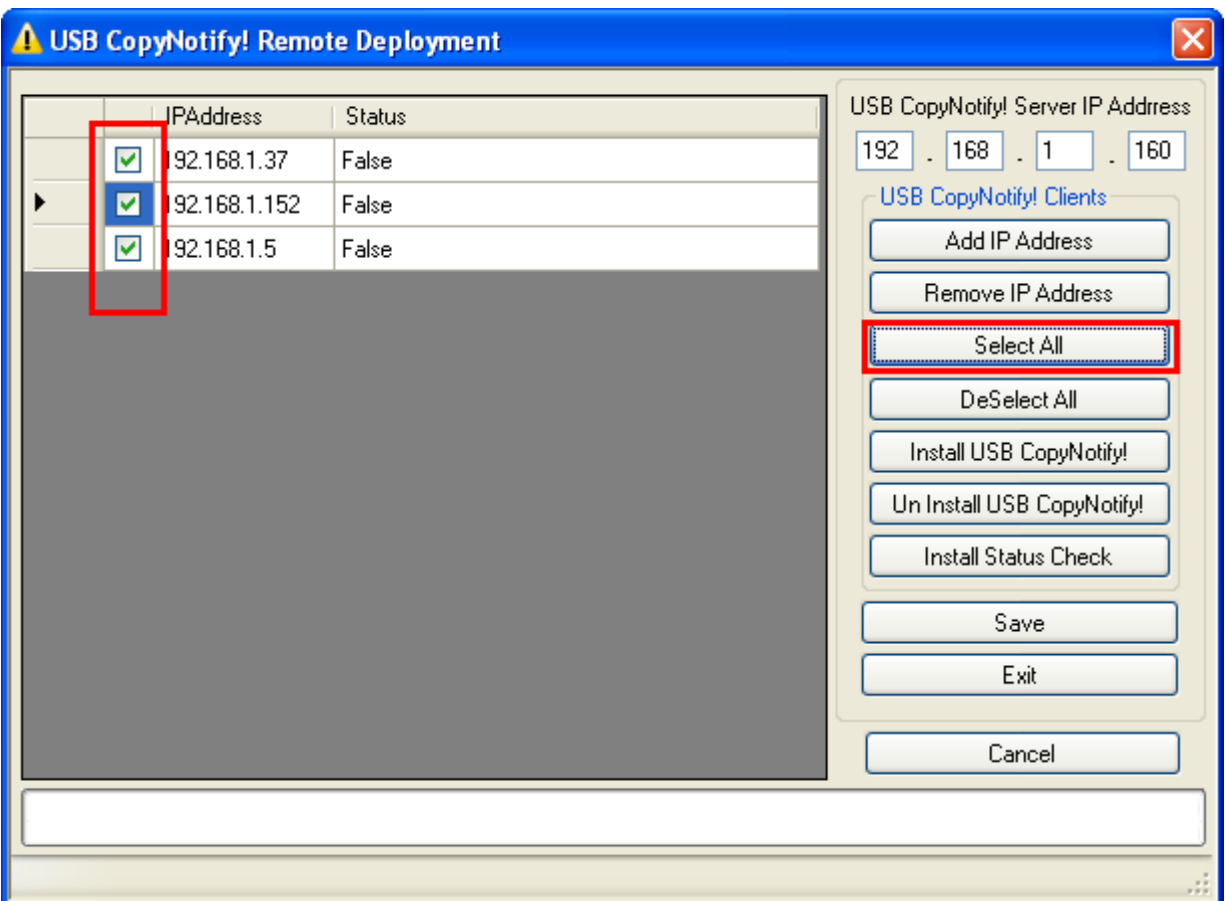
Control & Monitor USB Device Usage  
REMOTE DEPLOYMENT WIZARD

Select ALL:

This will select all the IP addresses in the list.

Note :

All operations are executed only on the IP addresses that are selected.





# USB CopyNotify! (Ver. 1.6)

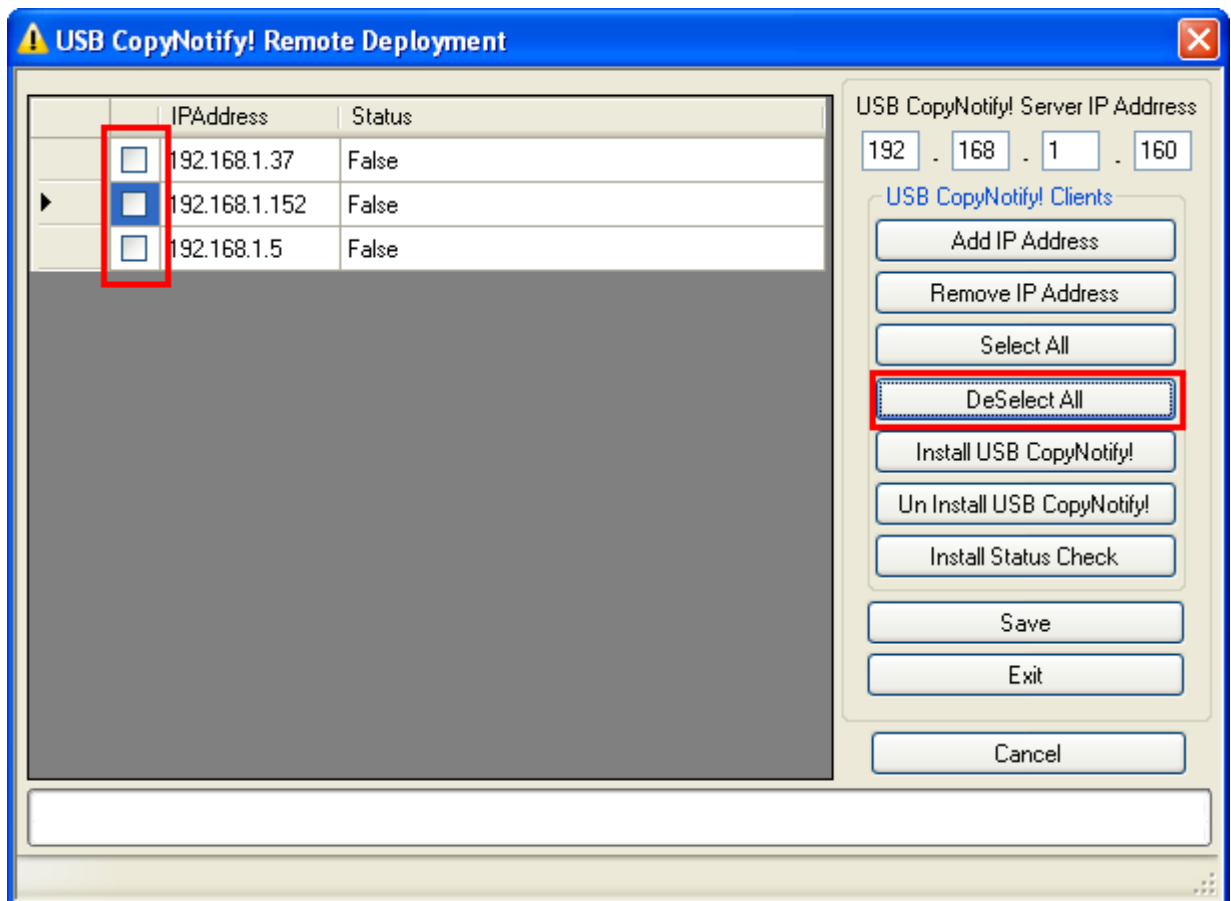
Control & Monitor USB Device Usage  
REMOTE DEPLOYMENT WIZARD

## De Select ALL:

This will de select all the IP addresses the list.

**Note :**

All operations are executed only on the IP addresses that are selected.





# USB CopyNotify! (Ver. 1.6)

Control & Monitor USB Device Usage  
REMOTE DEPLOYMENT WIZARD

## Install USB CopyNotify!:

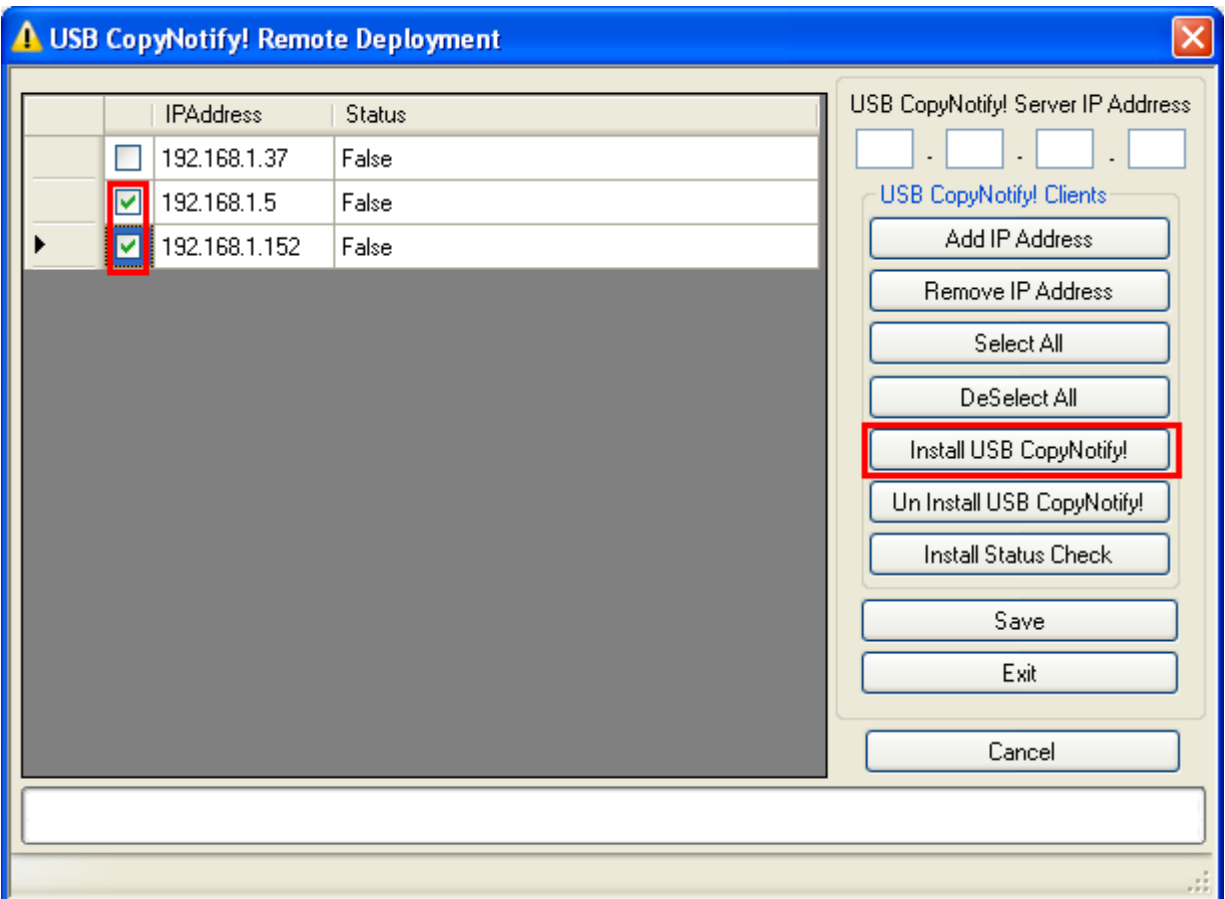
This will install USB CopyNotify! remotely on the selected IP address.

In order to select the IP address you will need to click on the check box next to the IP address in the list.

**Note :**

The Install USB CopyNotify! Operation will be executed only on the IP addressed that are selected.

You will need to specify the USB CopyNotify! Server IP Address which will be applied to all the USB CopyNotify! Clients which are being remotely installed.





# USB CopyNotify! (Ver. 1.6)

Control & Monitor USB Device Usage  
REMOTE DEPLOYMENT WIZARD

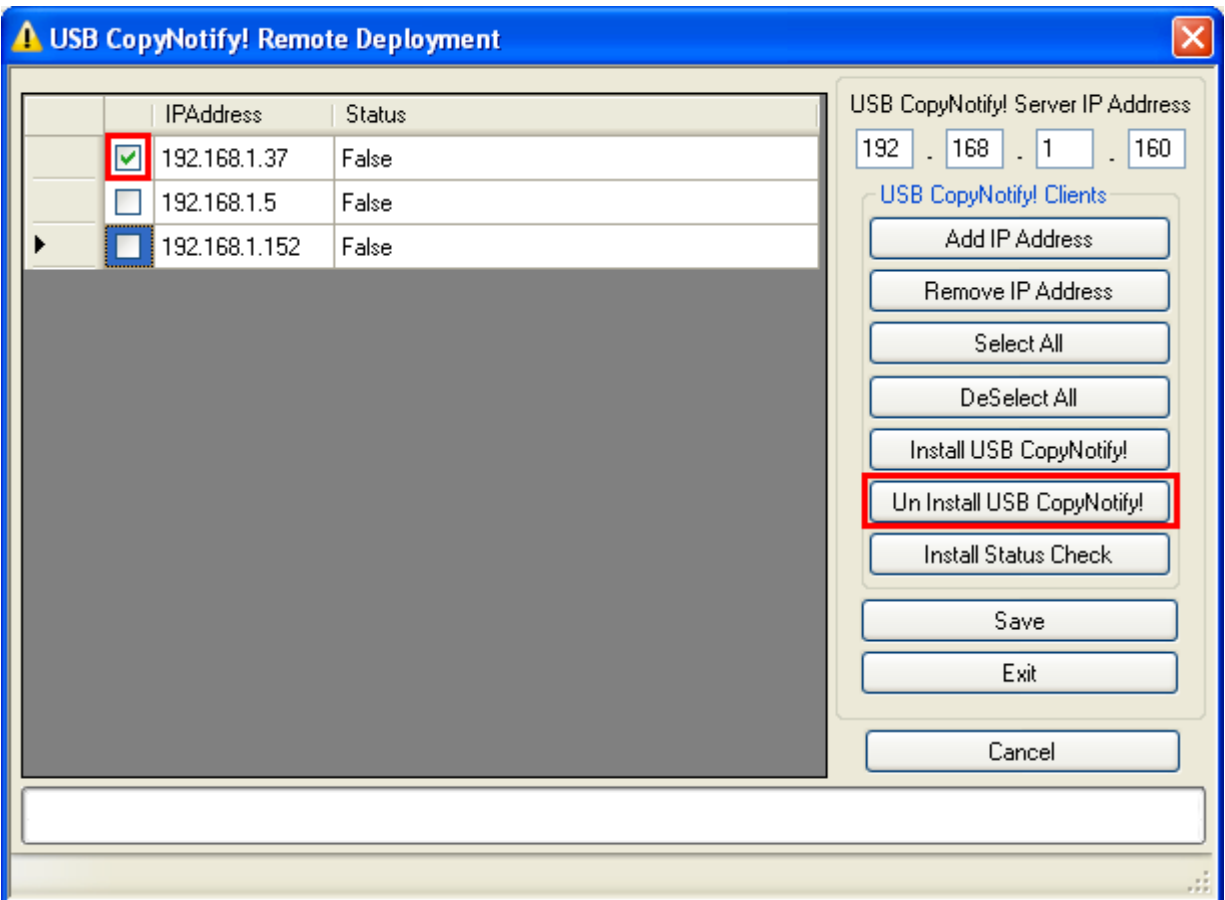
## Un Install USB CopyNotify!:

This will un install USB CopyNotify! remotely from the selected IP address.

In order to select the IP address you will need to click on the check box next to the IP address in the list.

**Note :**

The Un - Install USB CopyNotify! Operation will be executed only on the IP addressed that are selected.



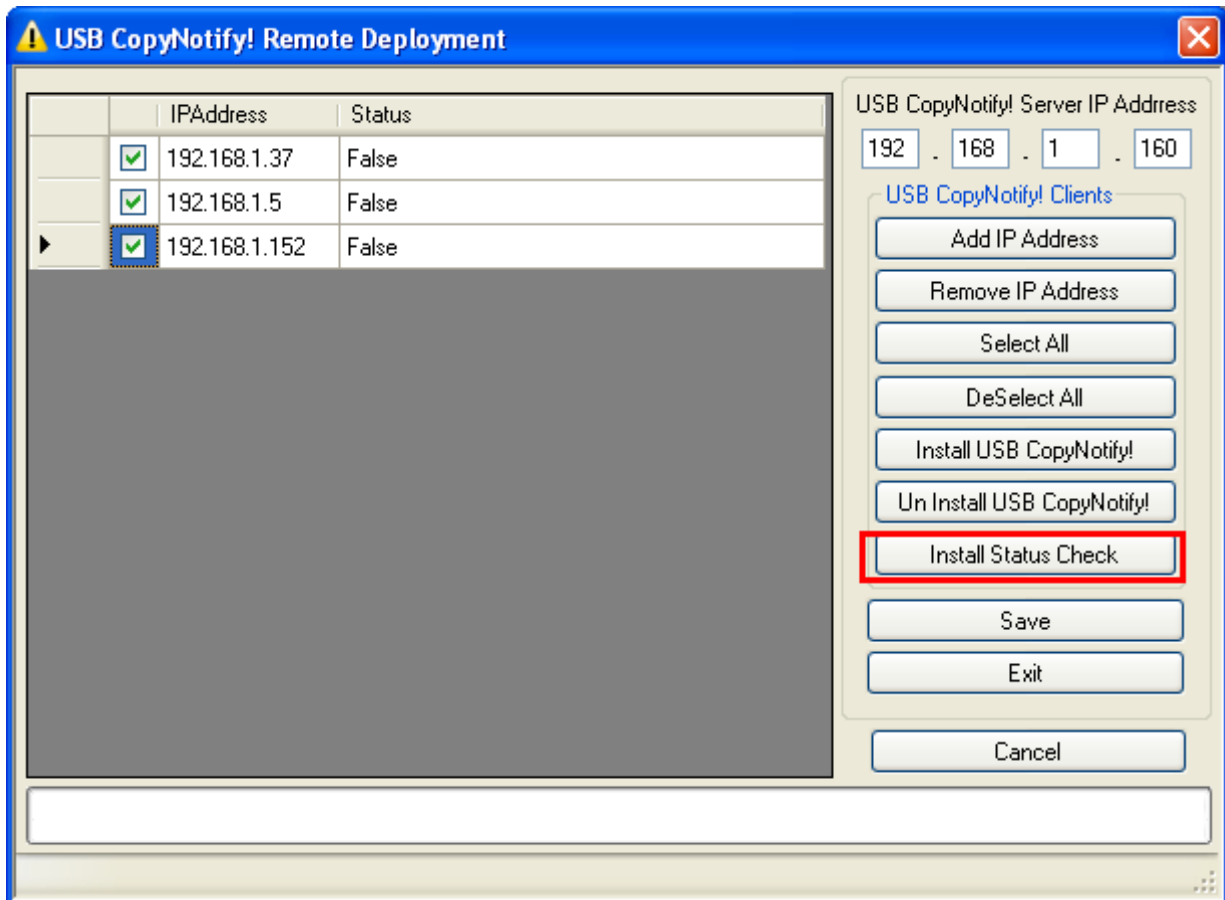


# USB CopyNotify! (Ver. 1.6)

Control & Monitor USB Device Usage  
REMOTE DEPLOYMENT WIZARD

## Install Status Check:

This will allow you to check whether USB CopyNotify! is running on the selected IP addresses. In order to select the IP address you will need to click on the check box next to the IP address in the list.



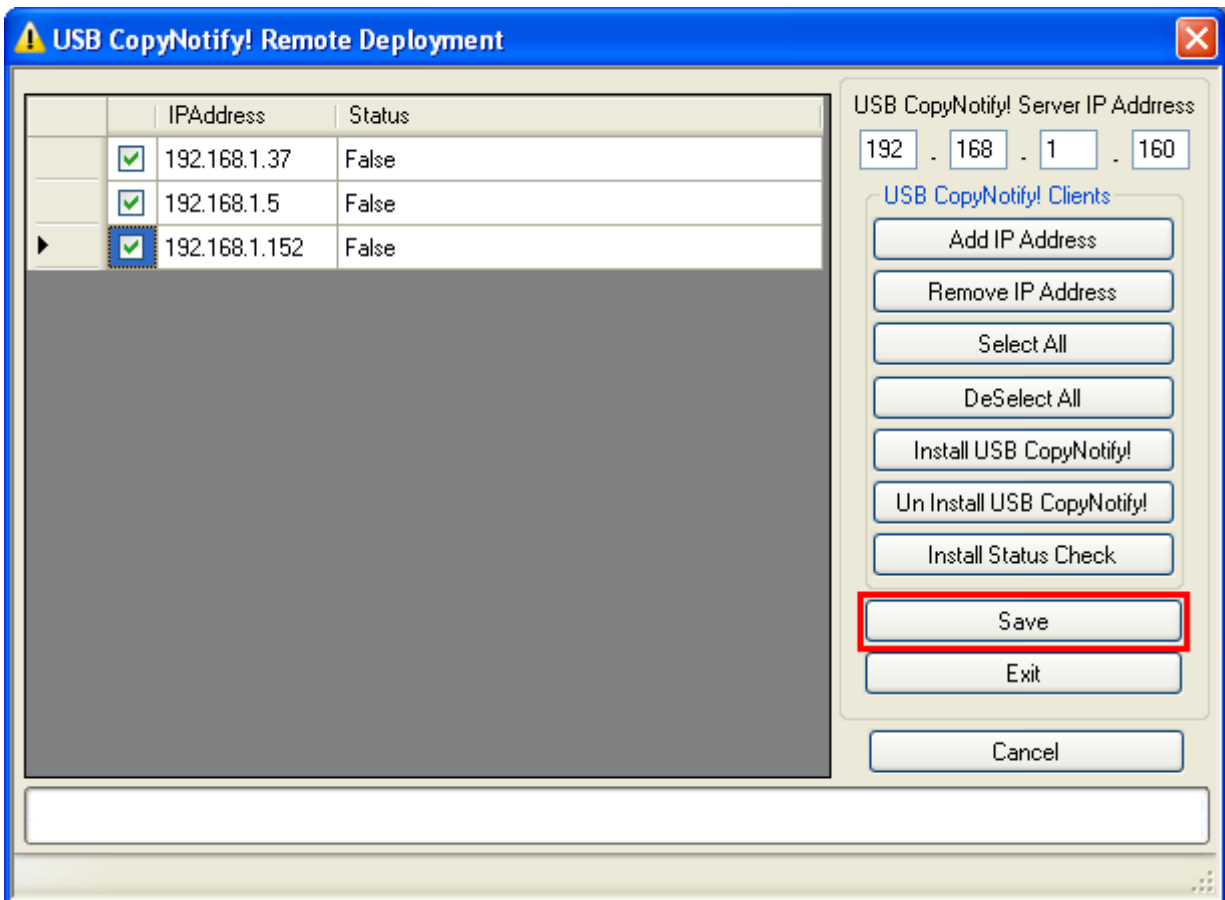


# USB CopyNotify! (Ver. 1.6)

Control & Monitor USB Device Usage  
REMOTE DEPLOYMENT WIZARD

Save:

This will allow you to save the List of IP addresses that have been entered.





# USB CopyNotify! (Ver. 1.6)

Control & Monitor USB Device Usage  
REMOTE DEPLOYMENT WIZARD

**Exit:**

This will allow you to exit the application.